

ALTERATIONS &
ADDITION TO
RESIDENCE

144 WEST 82ND ST
NEW YORK, NY 10024

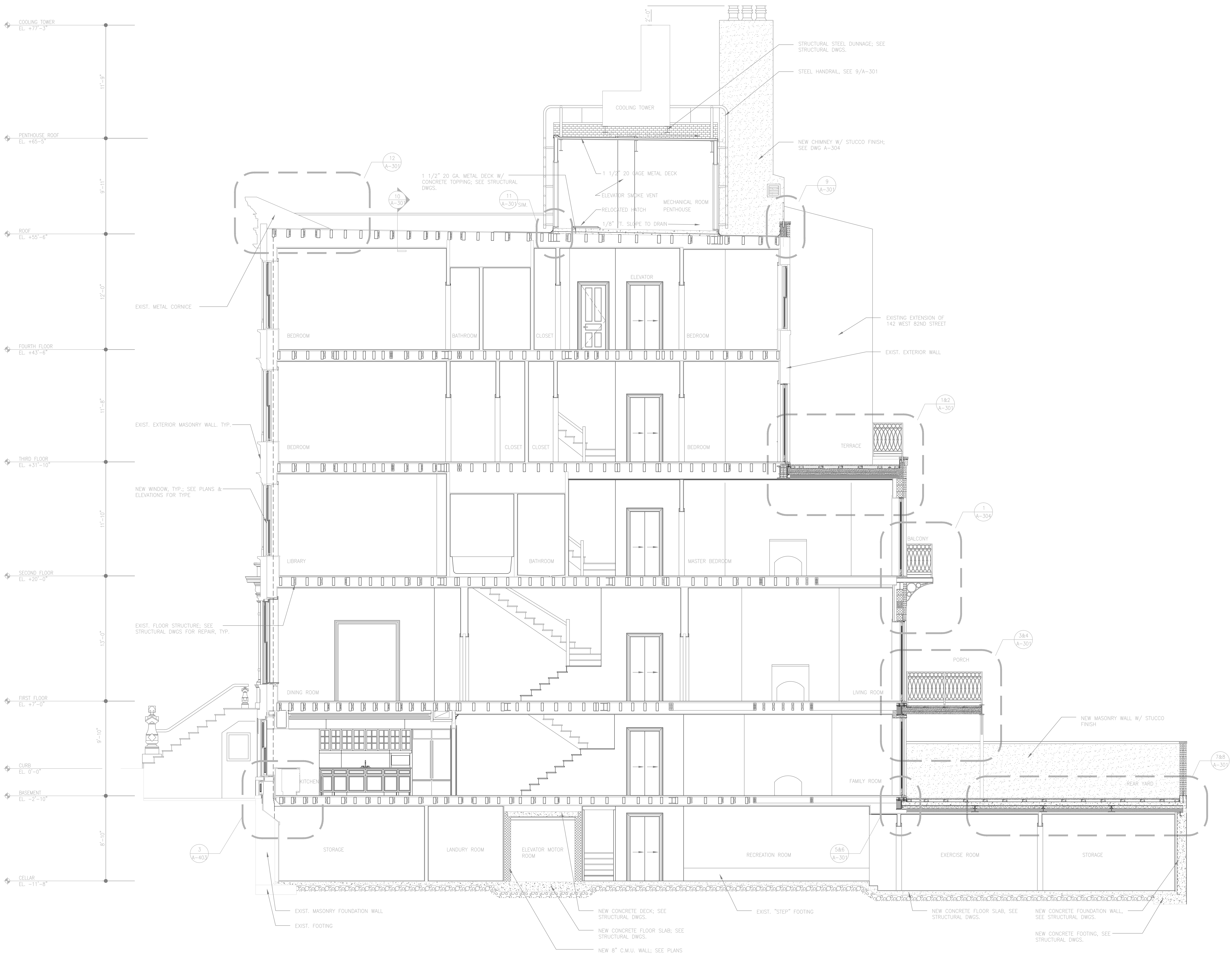
BLOCK 1212, LOT 51
ALT. 1 APPLICATION

Goshow Architects LLP
36 West 25th Street / New York, NY 10010-2772
Voice 212.242.3735 / Fax 212.727.7460
Email info@goshow.com
www.goshow.com



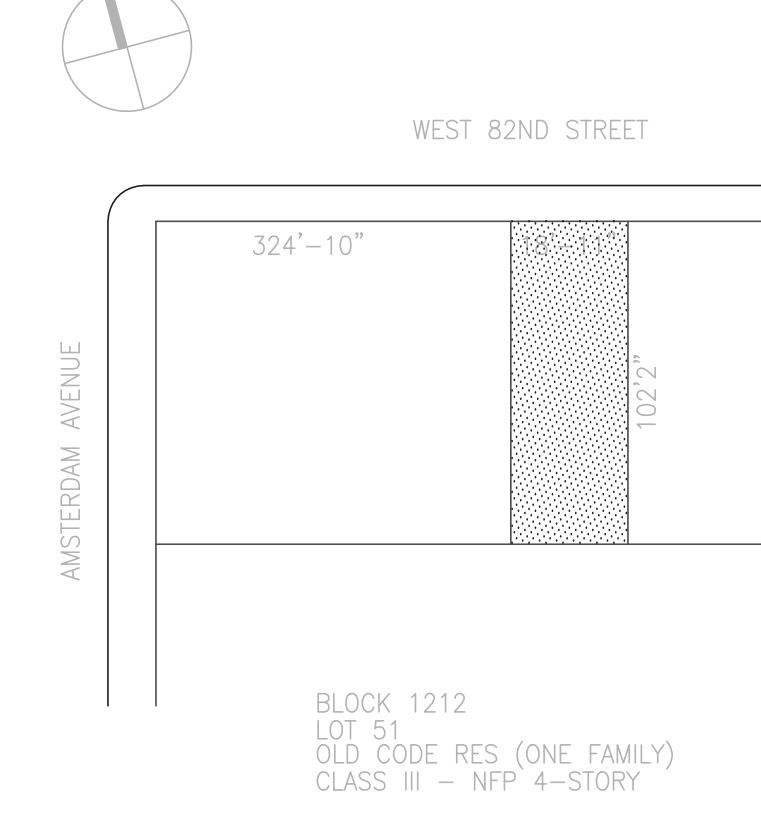
Rodney D. Gible
Consulting Engineers
1123 Broadway, Suite 917 New York, N.Y. 10010
Voice 212.989.2853 Fax 212.989.4017
Email rod@gible-engrs.com

Alan R. Schwartz P.E.
Consulting Engineers
12 West 27th Street New York, N.Y. 10001
Voice 212.686.1476 Fax 212.929.2353
Email alanrschwartz@aol.net



No.	Date	Revision
1	10/04/01	Pricing Alternative

Key Plan:



Sheet Title:

NORTH-SOUTH SECTION
FACING EAST

GA Project No.:	20012.00
Scale:	
Designed by:	
Drawn by:	
Checked by:	
Date:	07/02/01

Stamp: Drawing No.:

1 FACING EAST
NORTH-SOUTH SECTION
A-20 SCALE: 1/4" = 1'-0"

PRICING SET - 070201
NOT FOR CONSTRUCTION

A-201