

GoshowArchitects



Abel Bainnson Butz, LLP
Landscape Architects | Site Planners

44 West 28th Street, 5 R / New York, NY 10001
P 212.242.3735 / F 212.242.7460

GENERAL CONSTRUCTION NOTE:
SEE CIVIL AND STRUCTURAL
DRAWINGS FOR COMPLETE SCOPE
OF WORK

DESIGNED KT
DRAWN LAE
CHECKED MR
SECT. CHIEF FEG
PROJ. ENGR. JC

SCALE
AS SHOWN

Gannett Fleming
Hazen and Sawyer A Joint Venture
408 Seventh Avenue - New York, NY 10018
212.777.9400 - Fax 212.614.9049

APPROVED FOR THE CITY OF NEW YORK
EXECUTIVE PROJECT MANAGER
P.E.
CHIEF, UPSTATE WATER SUPPLY TREATMENT
& FACILITIES DIVISION



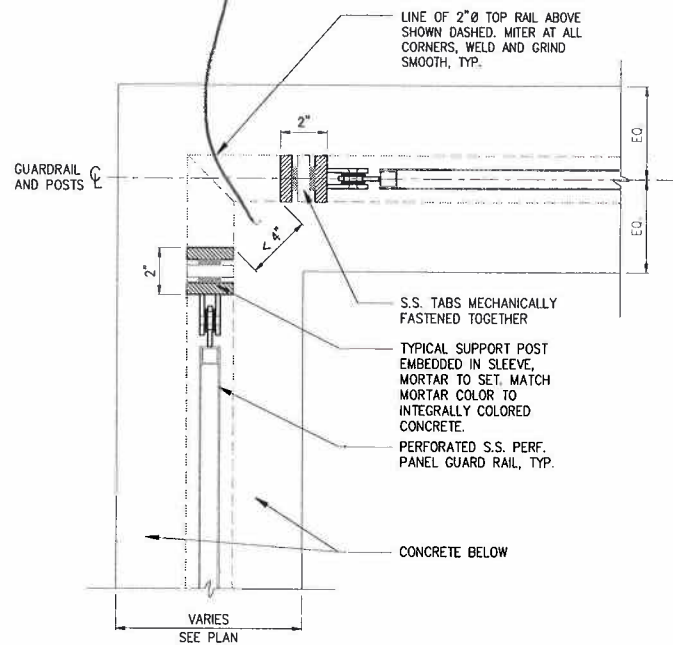
CITY OF NEW YORK
DEPARTMENT OF ENVIRONMENTAL PROTECTION
BUREAU OF ENGINEERING DESIGN & CONSTRUCTION
WM-30 WATERSHED IMPROVEMENTS
RECONSTRUCTION OF
CATSKILL WATERSHED DAMS AND ASSOCIATED FACILITIES

GILBOA DAM AND ASSOCIATED FACILITIES RECONSTRUCTION
CONTRACT CAT-212B
ARCHITECTURAL
DAM RECONSTRUCTION
DETAILS - SHEET 5 OF 5

90% SUBMITTAL

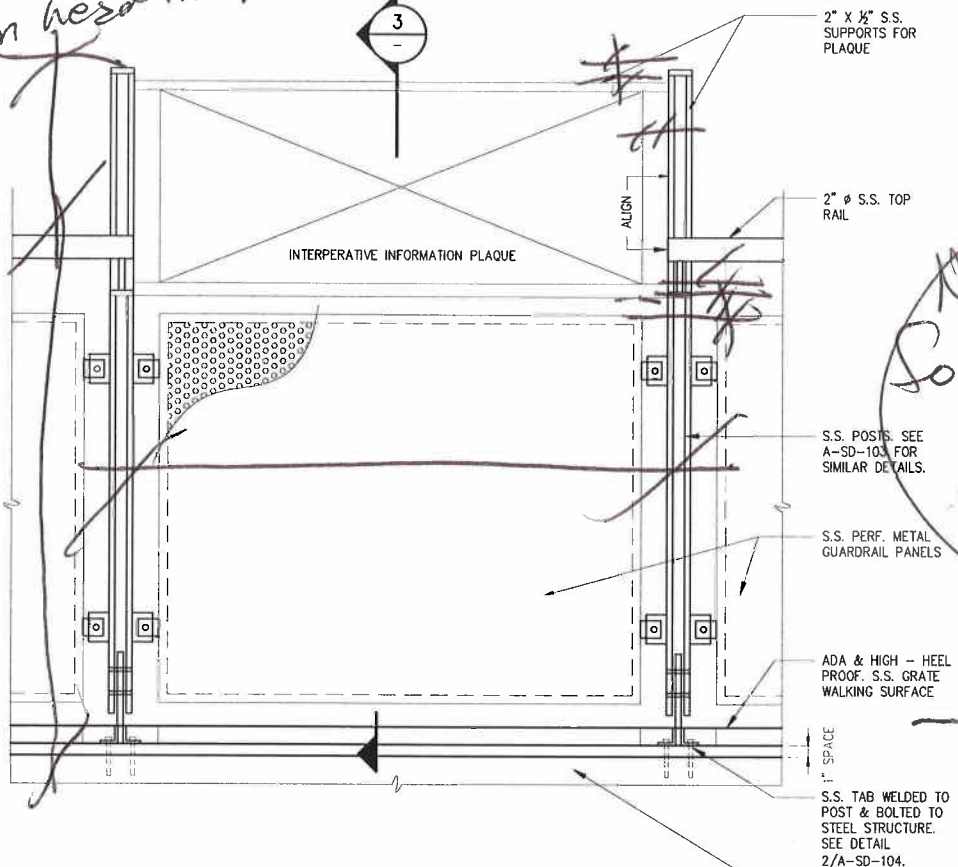
DATE AUGUST 2009
SHEET NO: A21 OF
DWG NO: A-SD-105

suggest 3" I've seen kids run head in 4" slot what is NYC code? 6" ball



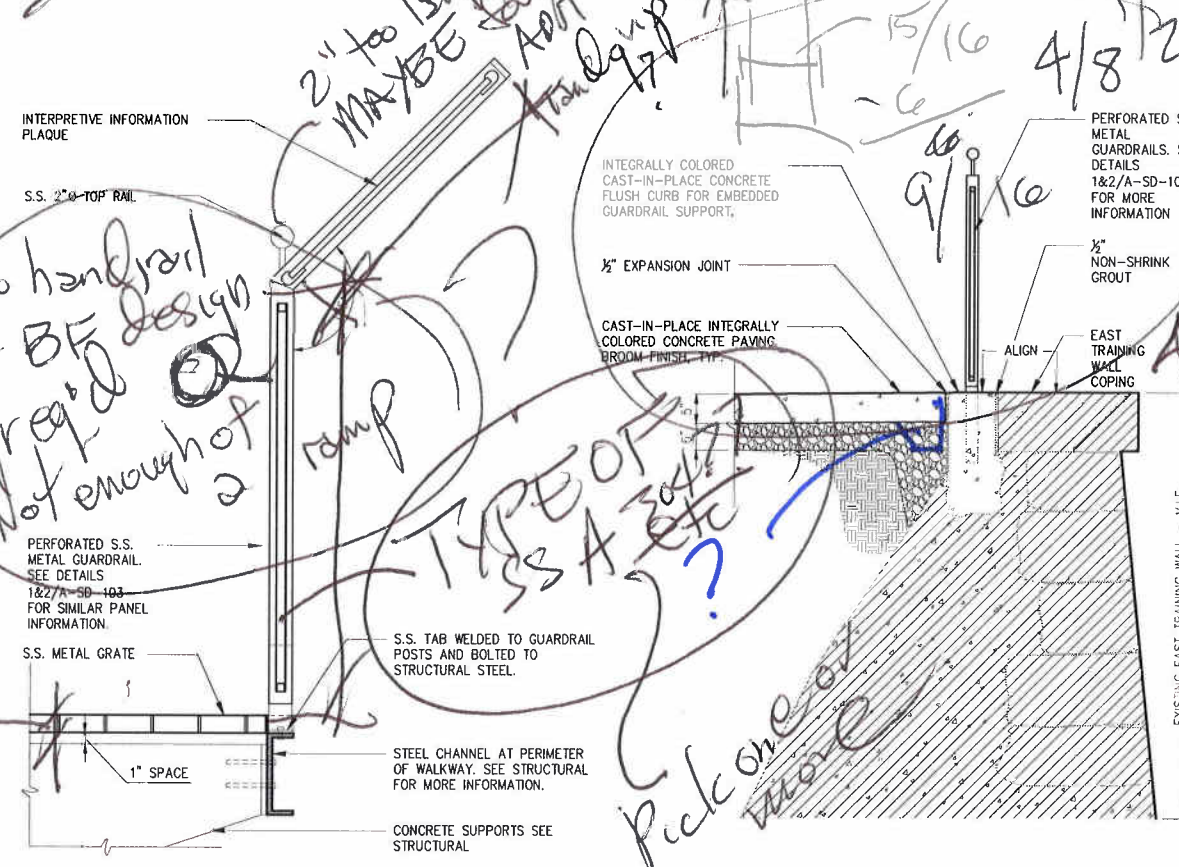
DETAIL AT GUARDRAIL CORNER

DETAIL 1
6\"/>



DETAIL AT BIOSWALE INFORMATION PLAQUE

DETAIL 2
1-1/2\"/>

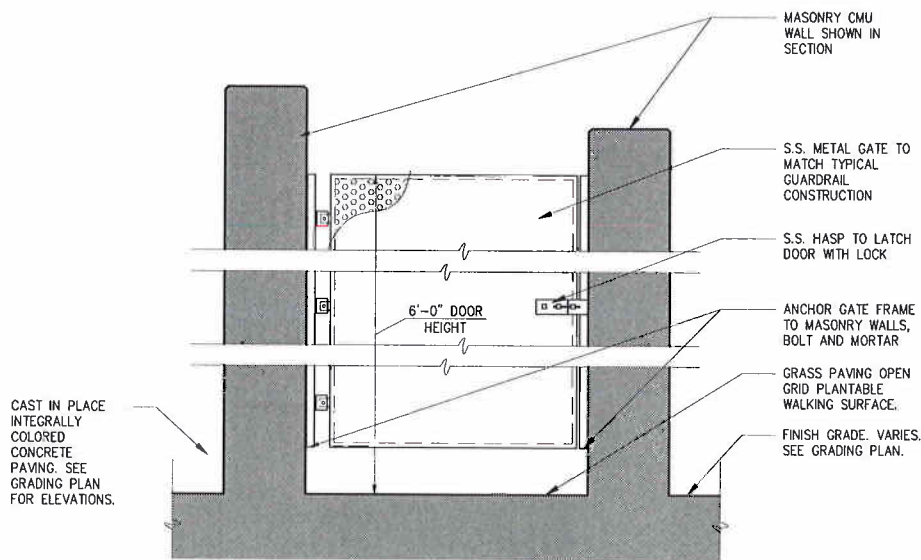


DETAIL AT BIOSWALE INFORMATION PLAQUE

DETAIL 3
3\"/>

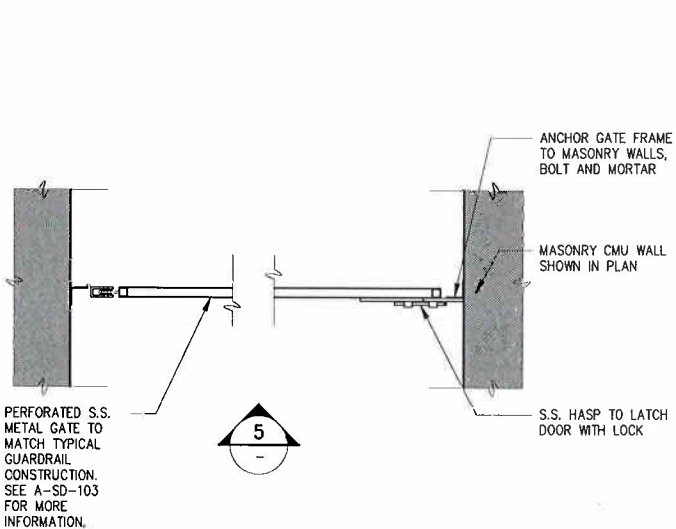
DETAIL AT EAST TRAINING WALL OVERLOOK

DETAIL 4
3/4\"/>



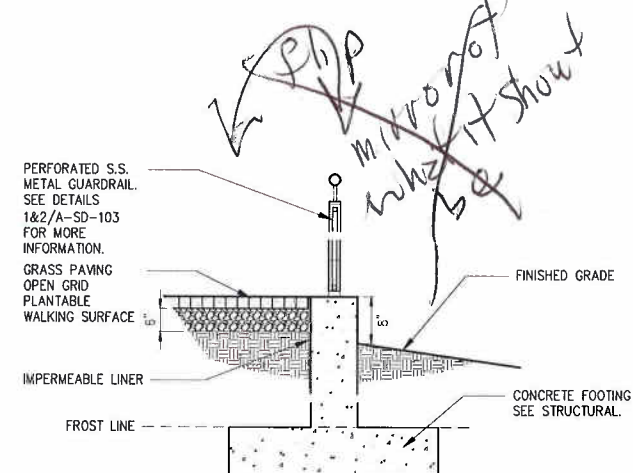
DETAIL AT ACCESS GATE ELEVATION

DETAIL 5
3/4\"/>



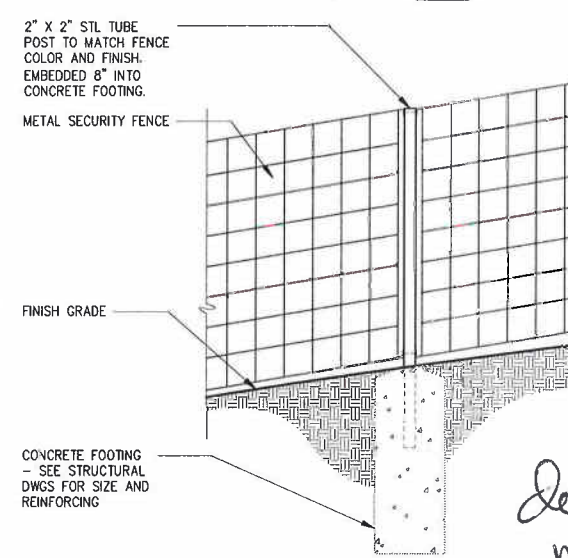
DETAIL AT ACCESS GATE PLAN

DETAIL 6
3/4\"/>



DETAIL AT STABILIZED GRASS TO GUARDRAIL EDGE

DETAIL 7
3\"/>



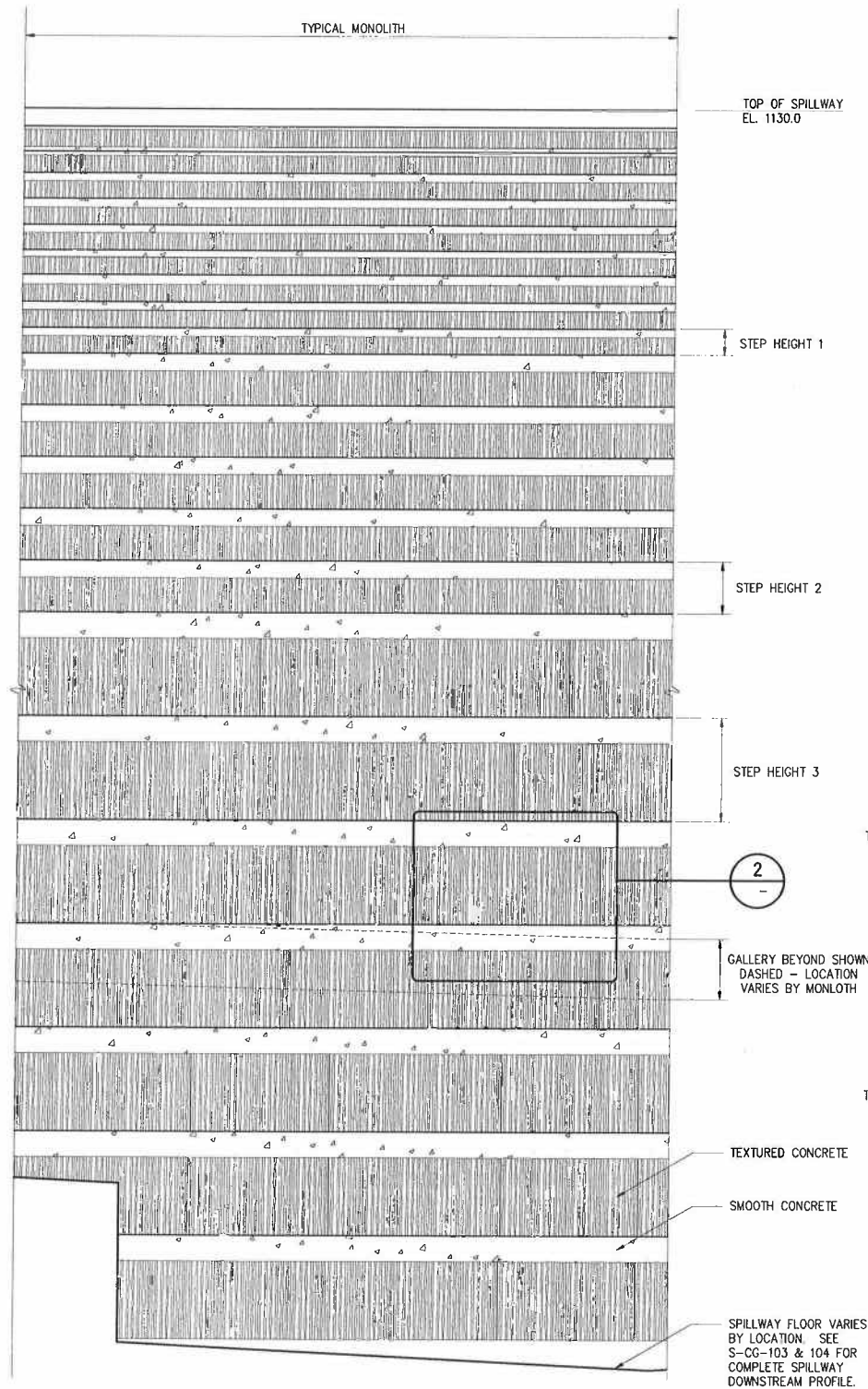
DETAIL AT EAST TRAINING WALL FENCE

DETAIL 8
3\"/>

Is this supposed to be this
don't match
if so

D:\p\p\0606060601 Gilboa Dam\DWG\Construction Documents\CAT-212B\Arch\ACW202.dwg, 8/21/2009 9:31:28 PM, Adobe PDF, pc3

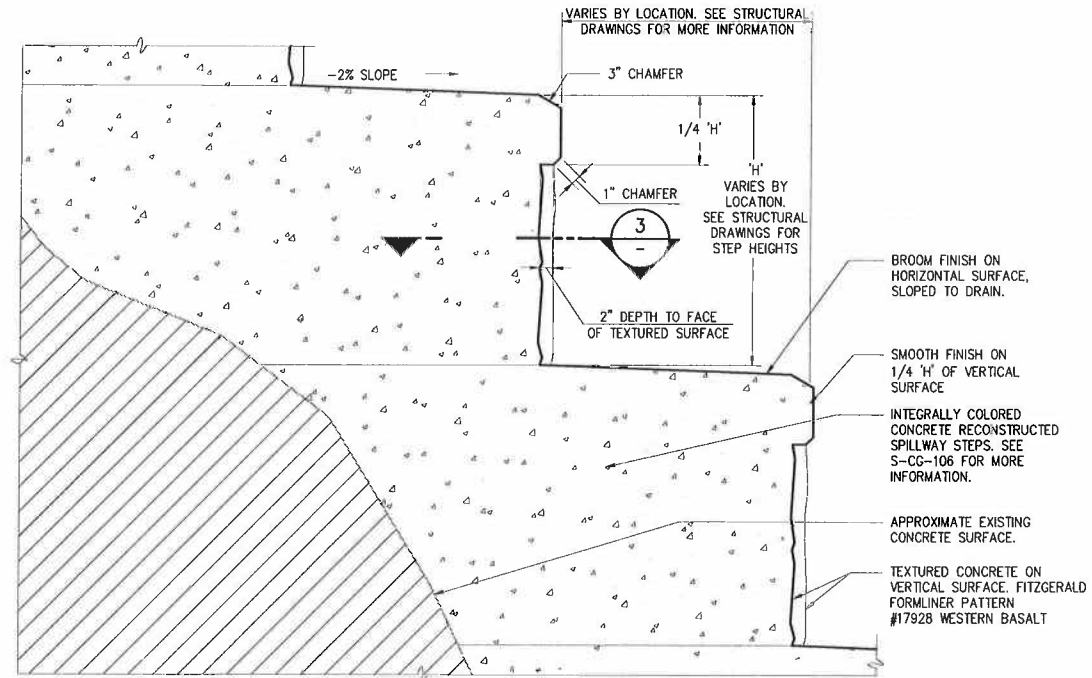
XREFs= CA-2121-BORDER, AZ-CW-101, AZ-CW-101, 43850 - Spillway Downstream Profile
WAC25= ABB Acad-Logo, Rodney Hodelbaum - New York Pt. Seal, 15-091-1, 15-091-2.



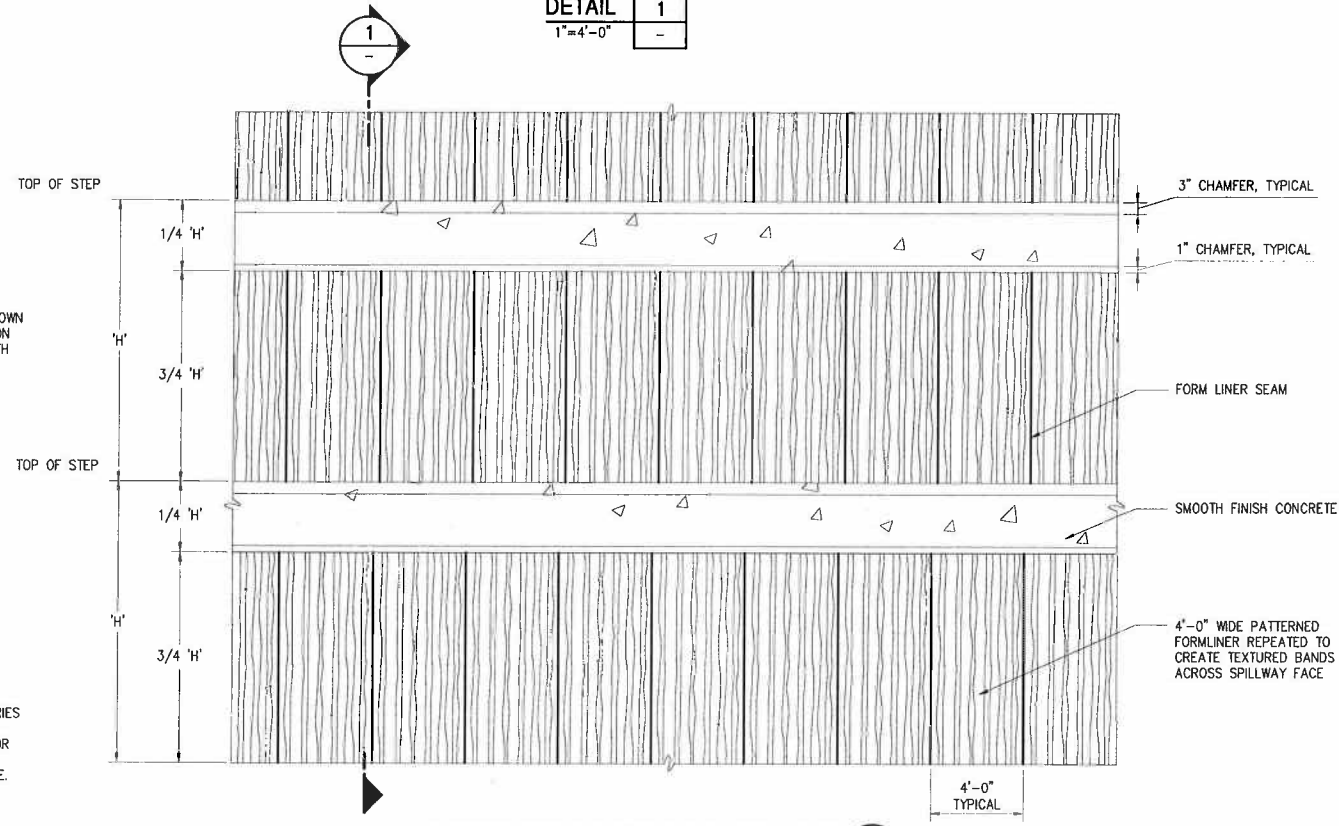
ENLARGED ELEVATION OF MONOLITH PATTERN
1"=10'

GoshowArchitects **abb** Abel Bainson Butz, LLP
44 West 28th Street, 5th Fl / New York, NY 10001
P 212.242.3735 / F 212.242.7460
Landscape Architects / Site Planners

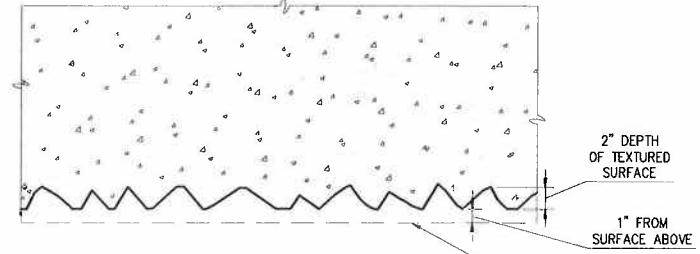
GENERAL CONSTRUCTION NOTE:
SEE CIVIL AND STRUCTURAL
DRAWINGS FOR COMPLETE SCOPE
OF WORK




TYPICAL SPILLWAY STEP
DETAIL 1
1"=4'-0"



ENLARGED VIEW OF TYPICAL SPILLWAY FACE
1"=4'



TYPICAL SPILLWAY PLAN
DETAIL 3
1"=4'-0"

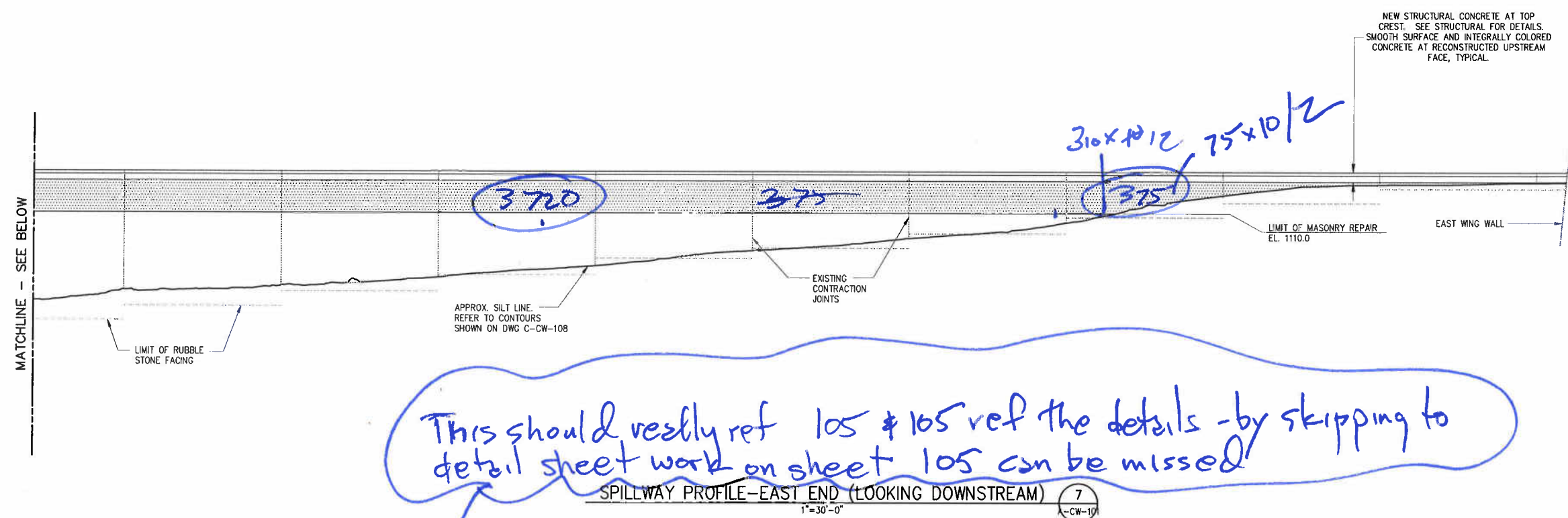
				<div>WARNING: IT IS A VIOLATION OF SECTION 2209.2 OF THE NEW YORK STATE EDUCATION LAW FOR ANY PERSON, UNLESS ACTING UNDER THE DIRECTION OF A LICENSED PROFESSIONAL ENGINEER, TO ALTER IN ANY WAY ANY PLANS, SPECIFICATIONS, NOTES OR BUSINESS DOCUMENTS BEARING THE SEAL OF A PROFESSIONAL ENGINEER HAS BEEN VIOLATED. IF A NEW HEARING THE SEAL OF A PROFESSIONAL ENGINEER IS ALTERED, THE ALTERED ENGINEER SHALL AFTER 10 DAYS RETURN HIS SEAL AND THE NOTATION "ALTERED BY" FOLLOWED BY HIS SIGNATURE, THE DATE, AND A SPECIFIC DESCRIPTION OF THE ALTERATION.</div>		DESIGNED <u>KT</u> DRAWN <u>MW</u> CHECKED <u>MR</u> SECT. CHIEF <u>FEG</u> PROJ. ENGR. <u>JC</u>		SCALE AS SHOWN				<div>Gunnett Fleming Hazen and Sawyer <small>A Joint Venture</small> 406 Seventh Avenue • New York, NY 10018 212 777-8400 • Fax 212 614-9049</div>		APPROVED FOR THE CITY OF NEW YORK _____ EXECUTIVE PROJECT MANAGER _____ CHIEF, UPSTATE WATER SUPPLY TREATMENT & FACILITIES DIVISION		<div></div>		CITY OF NEW YORK DEPARTMENT OF ENVIRONMENTAL PROTECTION BUREAU OF ENGINEERING DESIGN & CONSTRUCTION WM-30 WATERSHED IMPROVEMENTS RECONSTRUCTION OF CATSKILL WATERSHED DAMS AND ASSOCIATED FACILITIES		GILBOA DAM AND ASSOCIATED FACILITIES RECONSTRUCTION CONTRACT CAT-212B ARCHITECTURAL		DATE <u>AUGUST 2009</u> SHEET NO: <u>A7</u> OF _____ DWG NO: <u>A-CW-202</u>	
NO. DATE ISSUED FOR BY																							

1/4" scale
1" = 600'

PATTERN LEGEND

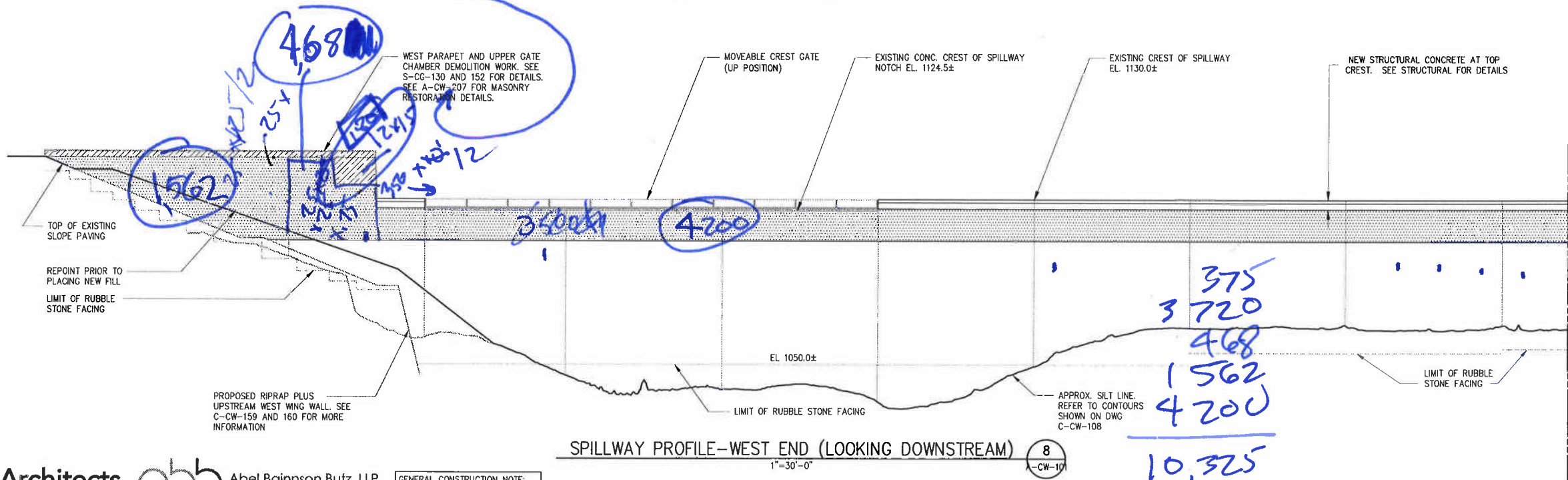
SYMBOL	DESCRIPTION
	AREA OF MASONRY RESTORATION AND REPOINTING
	AREA OF STONE REMOVAL. ADDITIONAL WORK AND RESTORATION

180
3460
3640



This should really ref 105 & 105 ref the details - by skipping to detail sheet work on sheet 105 can be missed

- NOTES:
- SEE S-CW-206 FOR REPOINTING DETAILS.
 - REPOINTING:
 - ALL REASONABLE EFFORTS ARE TO BE MADE TO PREVENT REMOVED GROUTING, AND OTHER CONSTRUCTION DEBRIS FROM FALLING INTO RESERVOIR; COLLECT & DISPOSE OF DEBRIS ONLY IN APPROVED AREAS.
 - REPOINT JOINTS OF MASONRY AS DETAILED IN SPECIFICATION SECTION 04901
 - REPOINT DOWN TO THE HIGHER OF EITHER TOP OF DISTRIBUTED GROUND, OR THE BOTTOM LIMIT OF STONE FACING; BUT NO LOWER THAN ELEVATION 1110.
 - REPOINTING WORK ON RESERVOIR-SIDE OF DAM IS TO BE EXPEDITED DURING PERIODS OF LOW RESERVOIR POOL; CONTRACTORS' ABILITY TO COMPLETE THE INTENDED MASONRY REPAIRS IS SUBJECT TO ADEQUATE DRAWDOWN OF RESERVOIR POOL.
 - CONTRACTOR SHALL SUBMIT LAYOUT PROPOSALS FOR ALL BLUESTONE REPLACEMENT WORK TOGETHER WITH PHOTOGRAPHS OF STONES FOR ARCHITECT'S APPROVAL.
 - LABEL PHOTOGRAPHS TO BE CROSS REFERENCED WITH SUBMITTED LAYOUTS FOR COLOR, QUALITY, AND SIZE. PROPOSED STONES SHALL BE EVALUATED AGAINST ADJACENT EXISTING STONE WHERE APPLICABLE.
 - WHENEVER POSSIBLE USE STONE FROM SAME LOCATION FOR REPLACEMENT.



10,325
22,100
29,190
61,615 # pointing

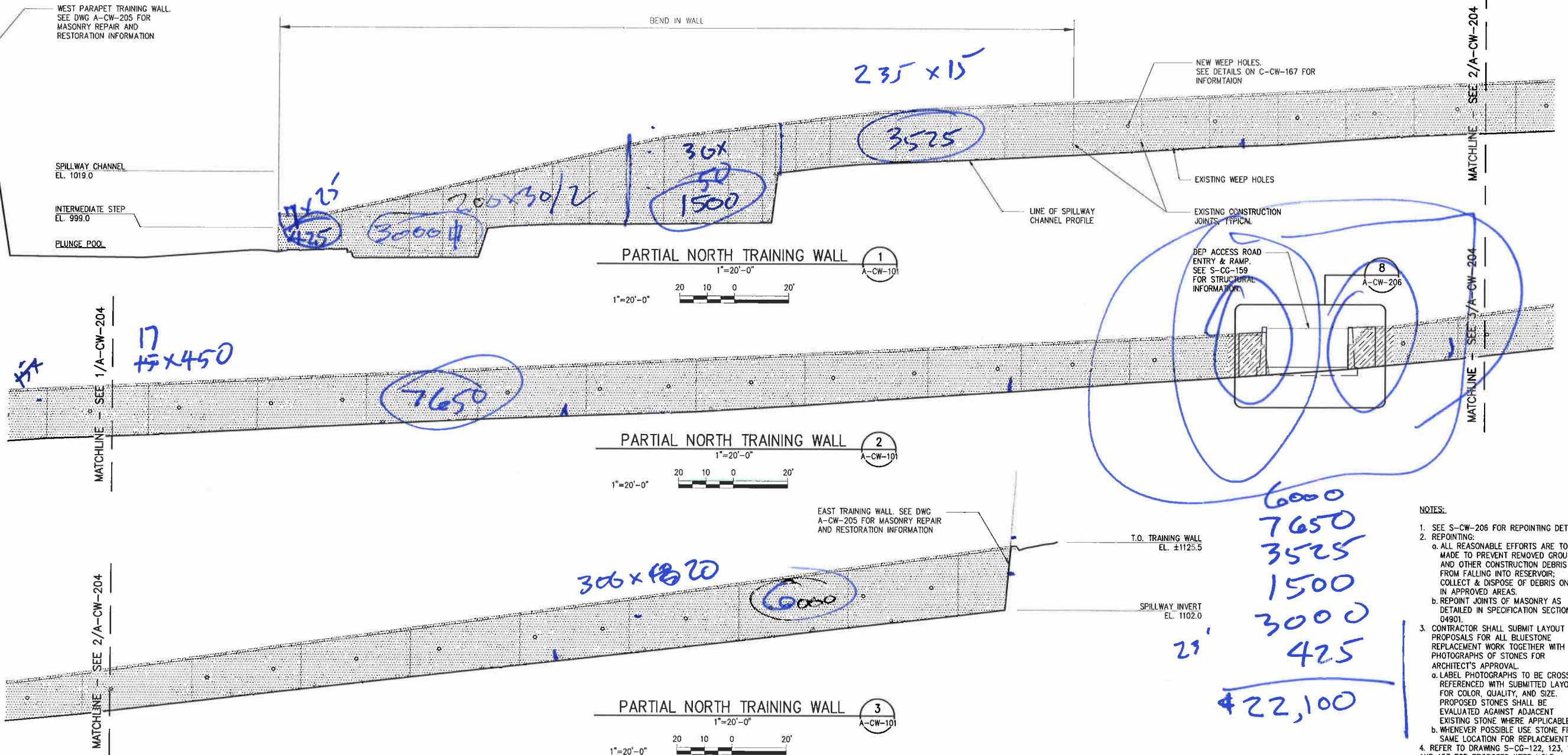
GoshowArchitects **abb** Abel Bainnson Butz, LLP
44 West 28th Street, 5 Fl / New York, NY 10001
P 212.242.3735 / F 212.242.7460

GENERAL CONSTRUCTION NOTE:
SEE CIVIL AND STRUCTURAL
DRAWINGS FOR COMPLETE SCOPE
OF WORK

DESIGNED	KT	SCALE	AS SHOWN	APPROVED FOR THE CITY OF NEW YORK	EXECUTIVE PROJECT MANAGER	CITY OF NEW YORK DEPARTMENT OF ENVIRONMENTAL PROTECTION BUREAU OF ENGINEERING DESIGN & CONSTRUCTION WM-30 WATERSHED IMPROVEMENTS RECONSTRUCTION OF CATSKILL WATERSHED DAMS AND ASSOCIATED FACILITIES	GILBOA DAM AND ASSOCIATED FACILITIES RECONSTRUCTION CONTRACT CAT-212B ARCHITECTURAL	DATE	AUGUST 2009
DRAWN	AM							SHEET NO.	A8 OF
CHECKED	MR							DWG NO.	A-CW-203
SECT. CHIEF	FEG								
PROJ. ENGR.	JC								

PATTERN LEGEND

SYMBOL	DESCRIPTION
	AREA OF MASONRY RESTORATION AND REPOINTING
	AREA OF STONE REMOVAL, ADDITIONAL WORK AND RESTORATION



NOTES:

- SEE S-CW-206 FOR REPOINTING DETAILS.
- REPOINTING:
 - ALL REASONABLE EFFORTS ARE TO BE MADE TO PREVENT REMOVED GROUTING, AND OTHER CONSTRUCTION DEBRIS FROM FALLING INTO RESERVOIR; COLLECT & DISPOSE OF DEBRIS ONLY IN APPROVED AREAS.
 - REPOINT JOINTS OF MASONRY AS DETAILED IN SPECIFICATION SECTION 04901.
- CONTRACTOR SHALL SUBMIT LAYOUT PROPOSALS FOR ALL BLUESTONE REPLACEMENT WORK TOGETHER WITH PHOTOGRAPHS OF STONES FOR ARCHITECT'S APPROVAL.
 - LABEL PHOTOGRAPHS TO BE CROSS REFERENCED WITH SUBMITTED LAYOUTS FOR COLOR, QUALITY, AND SIZE. PROPOSED STONES SHALL BE EVALUATED AGAINST ADJACENT EXISTING STONE WHERE APPLICABLE.
 - WHENEVER POSSIBLE USE STONE FROM SAME LOCATION FOR REPLACEMENT.
- REFER TO DRAWING S-CG-122, 123, 156, AND 157 FOR PROPOSED WEEP HOLE LOCATIONS AND DRAINAGE INFORMATION.
- DEP SECURITY FENCE NOT SHOWN.

GoshowArchitects



Abel Bainnson Butz, LLP
Landscape Architects | Site Planners

41 West 28th Street, 5 Fl / New York, NY 10001
P 212.242.3735 / F 212.242.7460

GENERAL CONSTRUCTION NOTE:
SEE CIVIL AND STRUCTURAL
DRAWINGS FOR COMPLETE SCOPE
OF WORK

<p>DESIGNED <u>KT</u> DRAWN <u>AM</u> CHECKED <u>MR</u> SECT. CHIEF <u>FEG</u> PROJ. ENGR. <u>JC</u></p>				<p>SCALE AS SHOWN</p>		<p>Gannett Fleming HAZEN AND SAWYER A Joint Venture 498 Seventh Avenue - New York, NY 10018 212.777.8400 - Fax: 212.614.4048</p>		<p>APPROVED FOR THE CITY OF NEW YORK EXECUTIVE PROJECT MANAGER P.E. CHIEF, UPSTATE WATER SUPPLY TREATMENT & FACILITIES DIVISION P.E.</p>		<p>NEW YORK CITY DEPARTMENT OF ENVIRONMENTAL PROTECTION DEP CITY OF NEW YORK DEPARTMENT OF ENVIRONMENTAL PROTECTION BUREAU OF ENGINEERING DESIGN & CONSTRUCTION WM-30 WATERSHED IMPROVEMENTS RECONSTRUCTION OF CATSKILL WATERSHED DAMS AND ASSOCIATED FACILITIES</p>		<p>GILBOA DAM AND ASSOCIATED FACILITIES RECONSTRUCTION CONTRACT CAT-212B ARCHITECTURAL MASONRY RESTORATION-TRAINING WALLS - SHEET 1 OF 2</p>		<p>90% SUBMITTAL DATE <u>AUGUST 2009</u> SHEET NO: <u>A9</u> OF <u> </u> DWG NO: <u>A-CW-204</u></p>	
--	--	--	--	---------------------------	--	--	--	--	--	---	--	--	--	---	--

47 he bader

210
150
2100

PATTERN LEGEND

SYMBOL	DESCRIPTION
	AREA OF MASONRY RESTORATION AND REPOINTING
	AREA OF STONE REMOVAL. ADDITIONAL WORK AND RESTORATION

12 size make 2 not 1 pg or
move to A-CW-101 & call general notes applicable to ALL work

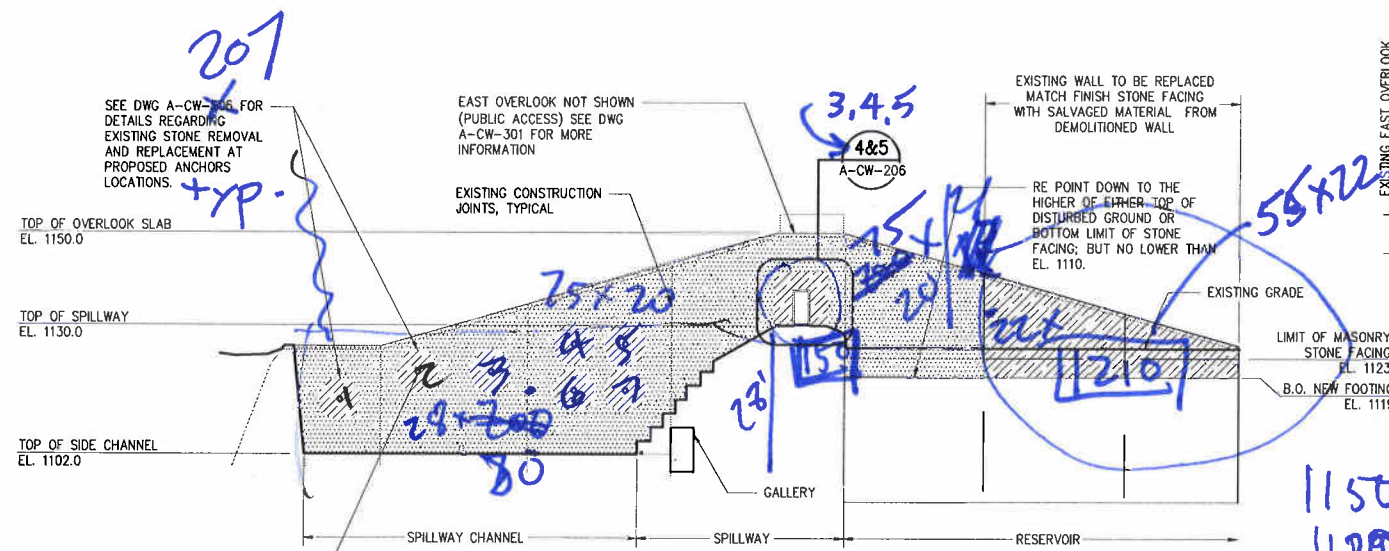
NOTES

- SEE A-CW-206 FOR REPOINTING DETAILS.
- ALL REASONABLE EFFORTS ARE TO BE MADE TO PREVENT REMOVED GROUTING, AND OTHER CONSTRUCTION DEBRIS FROM FALLING INTO RESERVOIR; COLLECT & DISPOSE OF DEBRIS ONLY IN APPROVED AREAS.
- REPOINT JOINTS OF MASONRY AS DETAILED IN SPECIFICATION SECTION 04901.
- REMOVAL & REPLACEMENT OF STONE BLOCKS FOR ROCK ANCHOR FACING:
 - AREA OF STONES TO BE REMOVED AS INDICATED ON DETAIL 7/A-CW-207.
 - STONES ARE TO BE REMOVED AS WHOLE UNITS. NO CUTTING OR MODIFYING OF STONES.
 - ALL STONES BEING REMOVED ARE TO BE DOCUMENTED AS TO THEIR POSITION ON THE WALL IN ORDER TO REPLACE THEM IN THE SAME LOCATION.
 - REMOVED STONES ARE TO BE CLEANED IS SPECIFIED IN SPECIFICATION SECTION 04910 - MASONRY CLEANING AND RESTORATION; STONES TO BE REUSED ONCE NEW ROCK ANCHORS HAVE BEEN INSTALLED.
 - CONTRACTOR'S STRUCTURAL ENGINEER TO SURVEY AREA OF STONE REMOVAL AND DETERMINE IF TEMPORARY SHORING AND BRACING OF THE SURROUNDING STONE IS REQUIRED.
 - IF SHORING IS TO BE REQUIRED, CONTRACTOR'S ENGINEER TO SUBMIT DRAWINGS FOR REVIEW.
 - UPON COMPLETION OF ROCK ANCHOR WORK, STONE BLOCKS ARE TO BE REPOSITIONED ON WALL IN ACCORDANCE WITH THEIR ORIGINAL POSITION AS DOCUMENTED.
 - DUE TO CONCRETE COVERAGE OF ROCK ANCHORS, IT MAY BE NECESSARY TO ALTER THE DEPTH OF THE STONE TO ENSURE ACCURATE FIT AND FACE ALIGNMENT.
 - STONES ARE TO BE FIELD MEASURED INDIVIDUALLY FOR FIT.
 - STONES ARE TO BE ALTERED BY QUALIFIED STONE MASON WITH A MINIMUM OF 5yr exp.
 - ANCHOR MOUNTS ARE TO BE USED TO SECURE RESET STONES TO CONCRETE FACE; SEE MASONRY ANCHOR DETAIL ON DRAWING S-CG-148 FOR DETAILS.
- REMOVAL & REPLACEMENT OF STONES BLOCKS FOR NEW EAST WALL DAM CREST ACCESS DOOR:
 - REMOVE STONES IN LAYOUT AREA OF NEW ACCESS DOOR AS INDICATED ON DETAIL 5/A-CW-206.
 - STONES ARE TO BE REMOVED OUT TO A MINIMUM OF 8" FROM PROPOSED FRAME OF ACCESS DOOR.
 - STONES ARE TO BE REMOVED AS WHOLE UNITS.
 - REMOVED STONES ARE TO BE CLEANED IS SPECIFIED IN SPECIFICATION SECTION 04910 - MASONRY CLEANING AND RESTORATION.
 - WHEN DOOR AND FRAME ARE IN POSITION, REMOVED STONES ARE TO BE MEASURED AND ALTERED TO FIT AROUND BORDER OF DOOR FRAME; NEW PRE-CAST REINFORCED CONCRETE LENTIL TO BE INSTALLED ABOVE DOOR FRAME.
 - SEE SPECIFICATION SECTION 04051 FOR MORTAR TYPE TO BE USED.
 - ANCHOR MOUNTS ARE TO BE USED TO SECURE RESET STONES TO CONCRETE FACE; SEE MASONRY ANCHOR DETAIL ON DRAWING S-CG-148 FOR DETAILS.
 - REMOVAL & REPLACEMENT OF STONES BLOCKS FOR NEW EAST WALL EXPANSION JOINT:
 - REMOVE STONES IN WHOLE UNITS ALONG VERTICAL LINE OF NEW EXPANSION JOINT AS INDICATED ON DETAIL 5/A-CW-206.
 - CONTRACTOR'S STRUCTURAL ENGINEER TO SURVEY AREA OF STONE REMOVAL AND DETERMINE IF TEMPORARY SHORING AND BRACING OF THE SURROUNDING STONE IS REQUIRED.
 - IF SHORING IS TO BE REQUIRED, CONTRACTOR'S STRUCTURAL ENGINEER TO SUBMIT DRAWINGS FOR REVIEW.
 - REMOVED STONES ARE TO BE CLEANED IS SPECIFIED IN SPECIFICATION SECTION 04910 - MASONRY CLEANING AND RESTORATION.
 - REMOVED STONES ARE TO BE CUT SO THAT WHEN THEY ARE RESET THE CUT ALIGNS (IS PARALLEL) WITH NEW EXPANSION JOINT.
 - SEE SPECIFICATION SECTION 04051 FOR MORTAR TYPE TO BE USED.
 - ANCHOR MOUNTS ARE TO BE USED TO SECURE RESET STONES TO CONCRETE FACE; SEE MASONRY ANCHOR DETAIL ON DRAWING S-CG-148 FOR DETAILS.
 - DEP SECURITY FENCE NOT SHOWN.

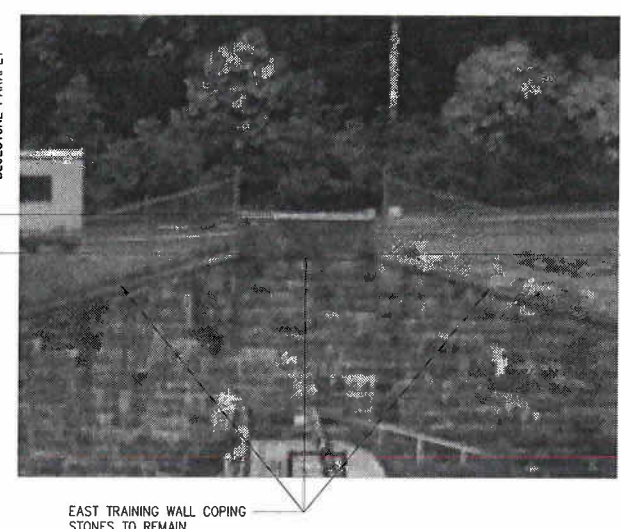
fill in maybe
if not spec'd add
Photograph each area
utilizing a key to plan
note ensure

copy & replace these notes
copy note here

This dwg has 3 details numbered 4, 2 & 6 ?? why not 1, 2 & 3?
90% SUBMITTAL

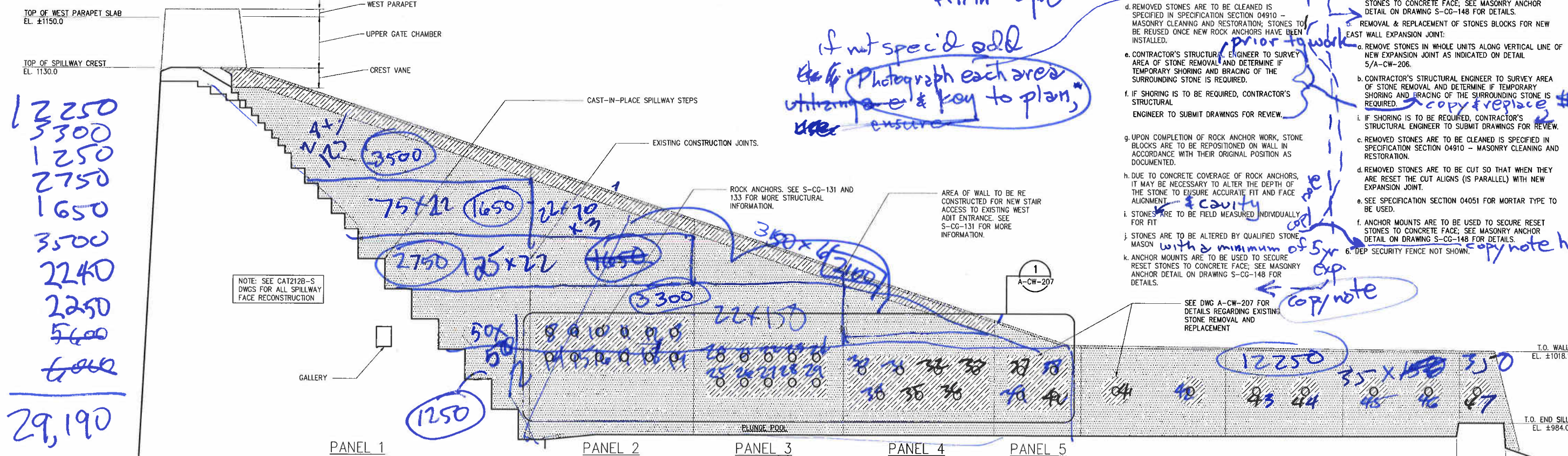


EAST TRAINING WALL 4 ACW101

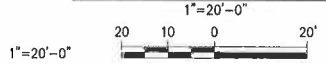


EXISTING EAST OVERLOOK PARAPET DEMOLITION

DETAIL 2



WEST TRAINING WALL 6 ACW101



12250
3300
1250
2750
1650
3500
2240
2250
5600
6060
29,190

1018
984
34

GoshowArchitects
44 West 28th Street, 5 Fl / New York, NY 10001
P 212.242.3735 / F 212.242.7460

Abel Bainnson Butz, LLP
Landscape Architects / Site Planners

GENERAL CONSTRUCTION NOTE:
SEE CIVIL AND STRUCTURAL
DRAWINGS FOR COMPLETE SCOPE
OF WORK

Gannett Fleming
Hazen and Sawyer
498 Seventh Avenue • New York, NY 10018
212.777.8400 • Fax: 212.614.8049

APPROVED FOR THE CITY OF NEW YORK
EXECUTIVE PROJECT MANAGER
CHIEF, UPSTATE WATER SUPPLY TREATMENT & FACILITIES DIVISION



CITY OF NEW YORK
DEPARTMENT OF ENVIRONMENTAL PROTECTION
BUREAU OF ENGINEERING DESIGN & CONSTRUCTION
WM-30 WATERSHED IMPROVEMENTS
RECONSTRUCTION OF
CATSKILL WATERSHED DAMS AND ASSOCIATED FACILITIES

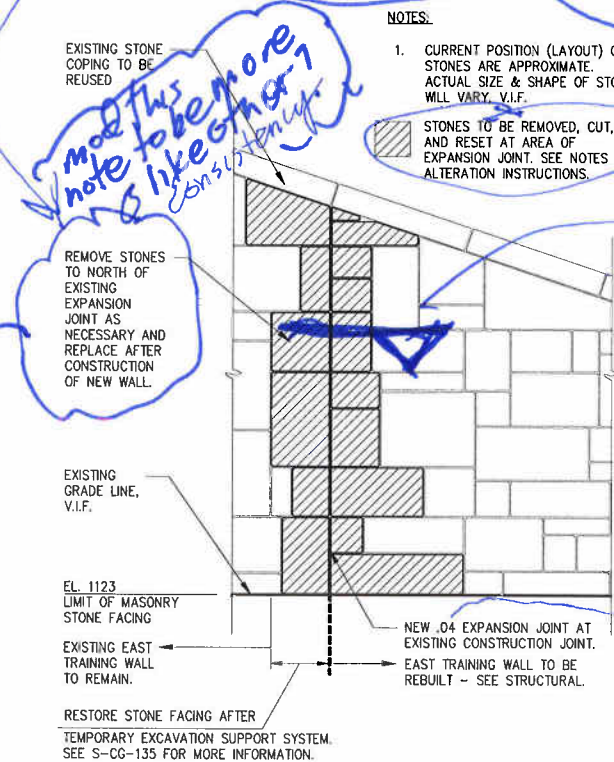
GILBOA DAM AND ASSOCIATED FACILITIES RECONSTRUCTION
CONTRACT CAT-212B
ARCHITECTURAL
MASONRY RESTORATION-TRAINING WALLS - SHEET 2 OF 2

DATE AUGUST 2009
SHEET NO: A10 OF
DWG NO: A-CW-205

C:\p\2008\08020821 Gilboa Dam\X CAD\Construction Documents\CAT-212B\Arch\ACW2050.dwg, 02/12/2009 8:56:10 PM, Adobe PDF, pdf

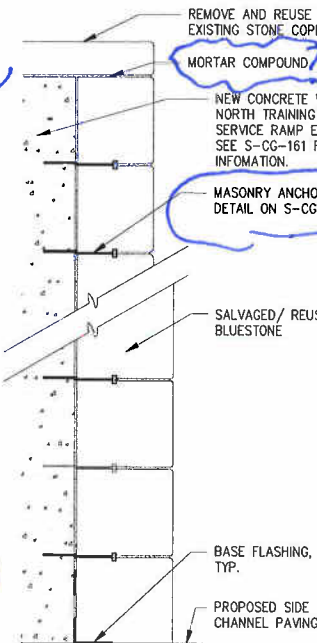
REPAIR OF DAMAGED FACING STONE DETAIL

DETAIL	1
NTS	-



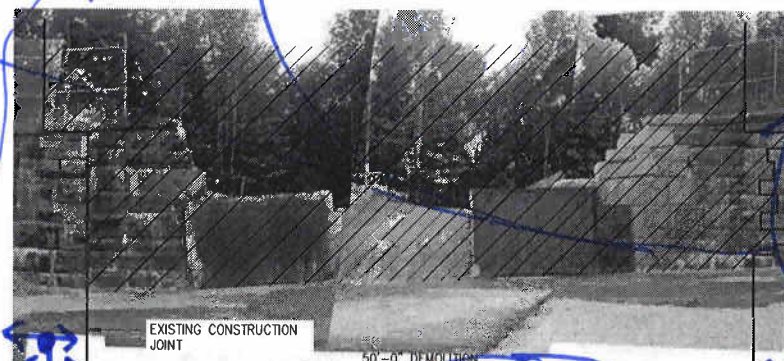
REPOINTING DETAIL

DETAIL	2
NTS	-



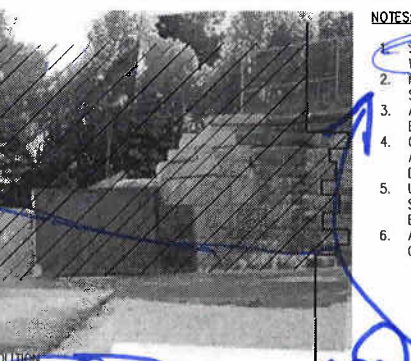
EAST TRAINING WALL DOOR STONE REMOVAL

DETAIL	5
NTS	-



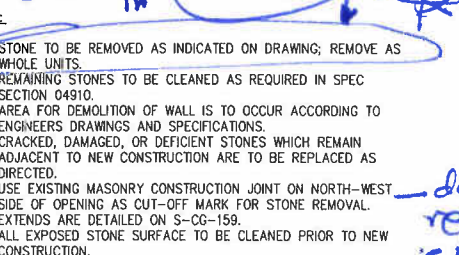
SECTION TAKEN AT NORTH OF NEW DOOR

DETAIL	3
NTS	-



NEW EAST TRAINING WALL GALLERY DOOR

DETAIL	4
NTS	-



EAST TRAINING WALL EXPANSION JOINT STONE REMOVAL/ REPLACEMENT

DETAIL	6
NTS	-

GoshowArchitects
44 West 28th Street, 5 R / New York, NY 10001
P 212.242.3735 / F 212.242.7460

Abel Bainson Butz, LLP
Landscape Architects | Site Planners

NEW STONE FACE @ RAMP

DETAIL	7
NTS	-

GENERAL CONSTRUCTION NOTE:
SEE CIVIL AND STRUCTURAL
DRAWINGS FOR COMPLETE SCOPE
OF WORK

Gunnett Fleming
Hazen and Sawyer A Joint Venture
400 Seventh Avenue - New York, NY 10018
212.777.4400 - Fax: 212.614.9048

APPROVED FOR THE CITY OF NEW YORK
EXECUTIVE PROJECT MANAGER
P.E.
CHIEF, UPSTATE WATER SUPPLY TREATMENT
& FACILITIES DIVISION



CITY OF NEW YORK
DEPARTMENT OF ENVIRONMENTAL PROTECTION
BUREAU OF ENGINEERING DESIGN & CONSTRUCTION
WM-30 WATERSHED IMPROVEMENTS
RECONSTRUCTION OF
CATSKILL WATERSHED DAMS AND ASSOCIATED FACILITIES

GILBOA DAM AND ASSOCIATED FACILITIES RECONSTRUCTION
CONTRACT CAU-212B
ARCHITECTURAL
DAM RECONSTRUCTION
MASONRY RESTORATION DETAILS - SHEET 1 OF 2

DATE AUGUST 2009
SHEET NO: A11 OF
DWG NO: A-CW-206

90% SUBMITTAL

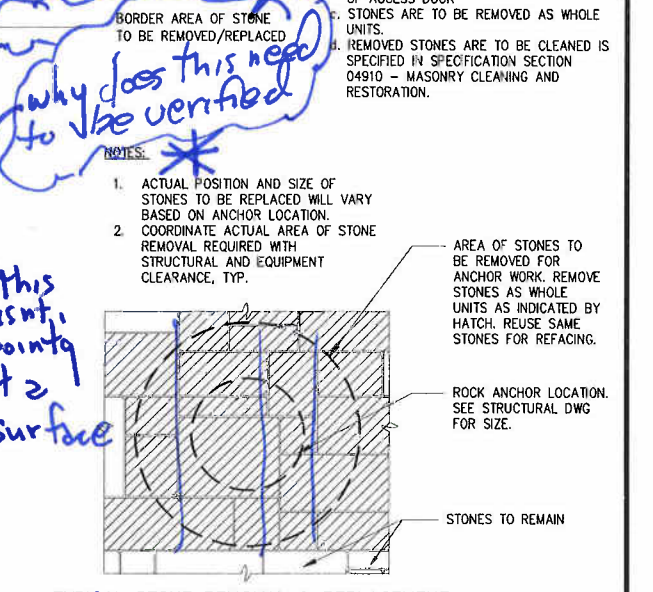
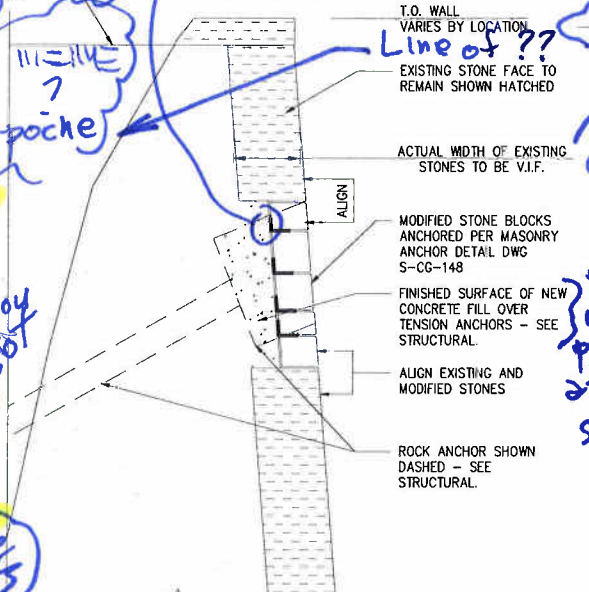
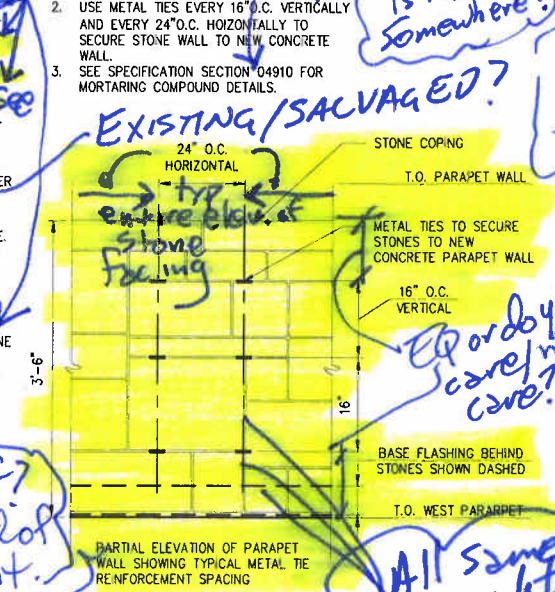
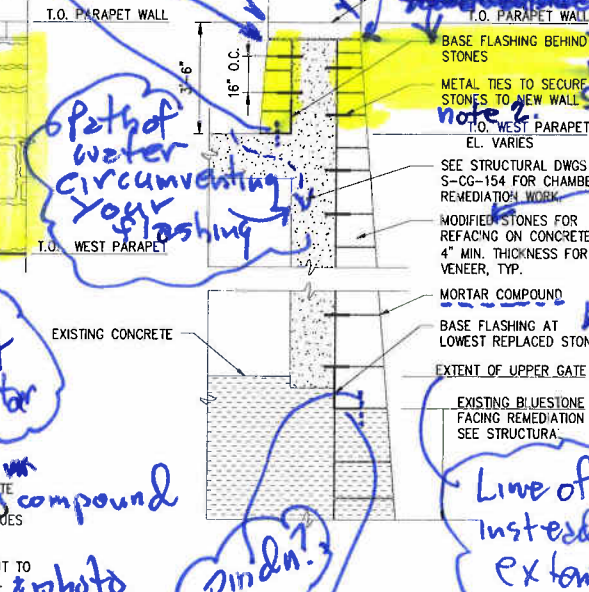
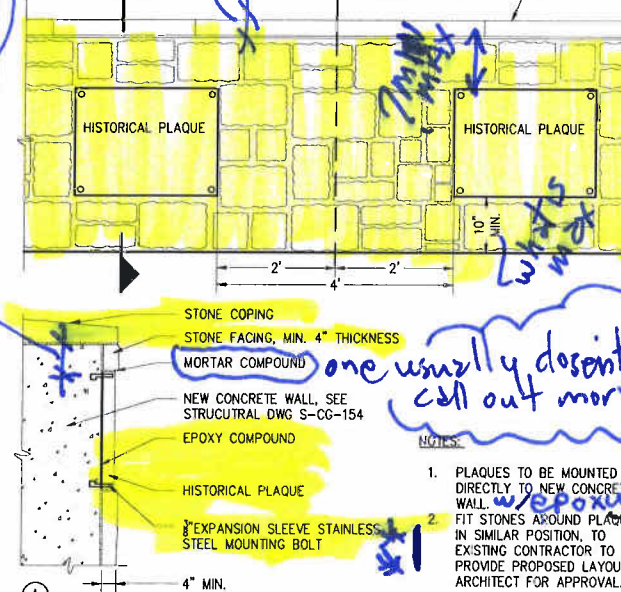
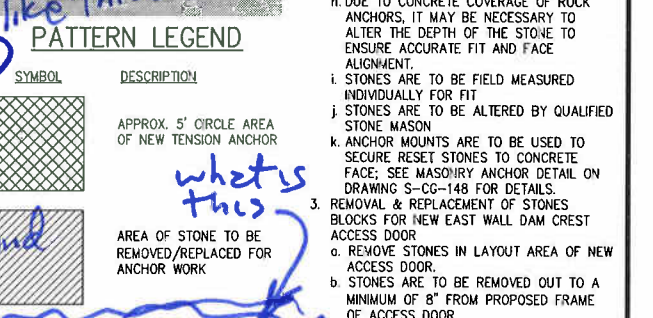
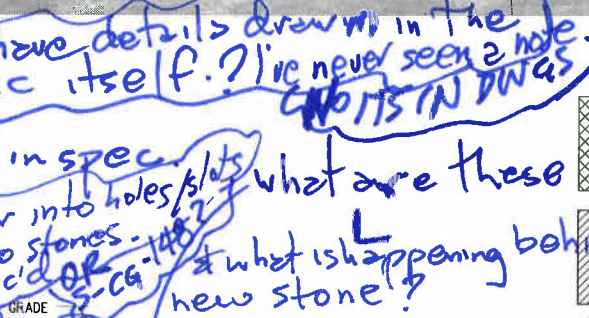
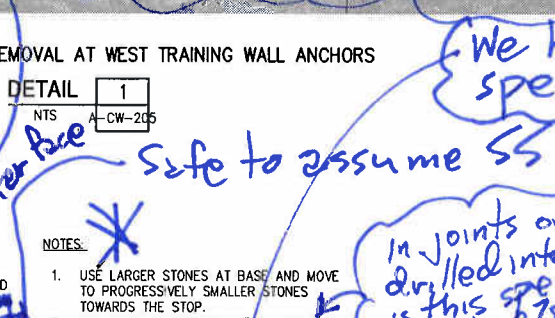
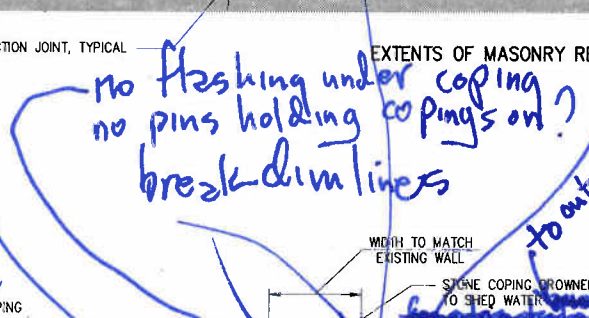
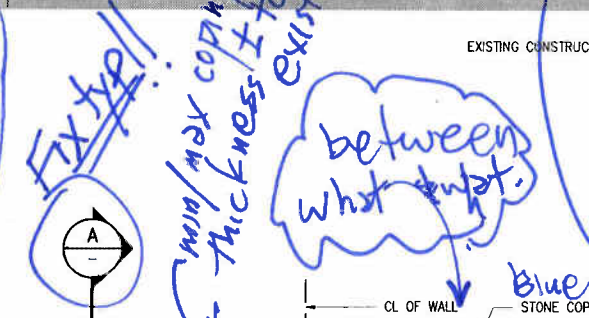
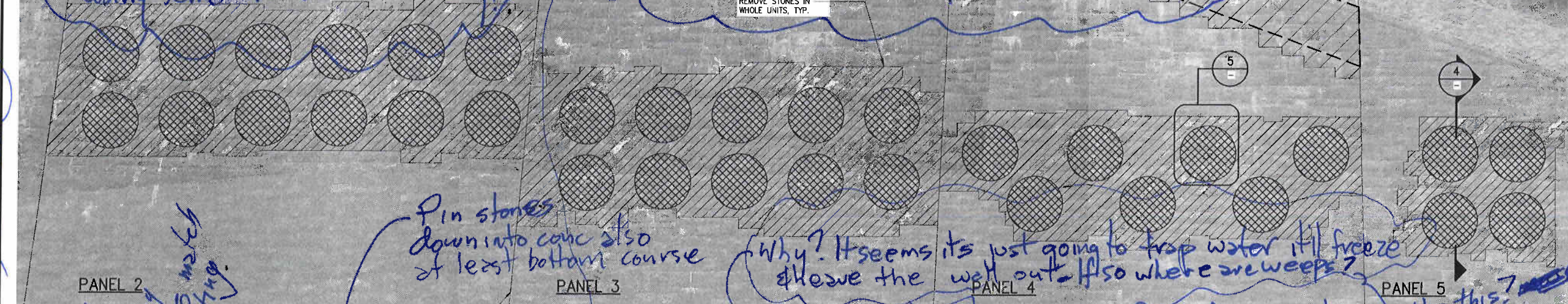
Min dim to ensure An enough from edge to prevent cracking when anchor tightened

*I have 4 sets of notes using same numbers - confusing!

Flush joint or overhang w/ or w/o drip

AREA OF STONE TO BE REMOVED FOR NEW STAIR TO ADIT ENTRANCE. SEE S-CG-131 AND S-CG-166 FOR MORE INFORMATION.

- NOTES:
- CONTRACTOR SHALL SUBMIT LAYOUT PROPOSALS FOR ALL BLUESTONE REPAIR AND REPLACEMENT WORK TOGETHER WITH PHOTOGRAPHS OF STONES FOR ARCHITECT'S APPROVAL.
 - LABEL PHOTOGRAPHS TO BE CROSS REFERENCED WITH SUBMITTED LAYOUTS FOR COLOR, QUALITY, AND SIZE. PROPOSED STONES WILL BE EVALUATED AGAINST ADJACENT STONE WHERE APPLICABLE.
 - WHENEVER POSSIBLE USE STONE FROM SAME LOCATION FOR REPLACEMENT.
 - REMOVAL & REPLACEMENT OF STONE BLOCKS FOR ROCK ANCHOR POSTS:
 - AREA OF STONES TO BE REMOVED AS INDICATED ON DRAWINGS.
 - STONES ARE TO BE REMOVED AS WHOLE UNITS. NO CUTTING OR MODIFYING OF STONES.
 - ALL STONES BEING REMOVED ARE TO BE DOCUMENTED AS TO THEIR POSITION ON THE WALL IN ORDER TO REPLACE THEM IN THE SAME LOCATION.
 - REMOVED STONES ARE TO BE CLEANED AS SPECIFIED IN SPECIFICATION SECTION 04910 - MASONRY CLEANING AND RESTORATION; STONES TO BE REUSED ONCE NEW TENSION ANCHORS HAVE BEEN INSTALLED.
 - CONTRACTOR'S STRUCTURAL ENGINEER TO SURVEY AREA OF STONE REMOVAL AND DETERMINE IF TEMPORARY SHORING AND BRACING OF THE SURROUNDING STONE IS REQUIRED.
 - SHORING IS TO BE REQUIRED, CONTRACTOR'S STRUCTURAL ENGINEER TO SUBMIT DRAWINGS FOR REVIEW.
 - UPON COMPLETION OF ROCK ANCHOR INSTALLATION, STONE BLOCKS ARE TO BE REPOSITIONED ON WALL IN ACCORDANCE WITH THEIR ORIGINAL POSITION AS DOCUMENTED.
 - DUE TO CONCRETE COVERAGE OF ROCK ANCHORS, IT MAY BE NECESSARY TO ALTER THE DEPTH OF THE STONE TO ENSURE ACCURATE FIT AND FACE ALIGNMENT.
 - STONES ARE TO BE FIELD MEASURED INDIVIDUALLY FOR FIT.
 - STONES ARE TO BE ALTERED BY QUALIFIED STONE MASON.
 - ANCHOR MOUNTS ARE TO BE USED TO SECURE RESET STONES TO CONCRETE FACE; SEE MASONRY ANCHOR DETAIL ON DRAWING S-CG-148 FOR DETAILS.
 - REMOVAL & REPLACEMENT OF STONES BLOCKS FOR NEW EAST WALL DAM CREST ACCESS DOOR:
 - REMOVE STONES IN LAYOUT AREA OF NEW ACCESS DOOR.
 - STONES ARE TO BE REMOVED OUT TO A MINIMUM OF 8" FROM PROPOSED FRAME OF ACCESS DOOR.
 - STONES ARE TO BE REMOVED AS WHOLE UNITS.
 - REMOVED STONES ARE TO BE CLEANED AS SPECIFIED IN SPECIFICATION SECTION 04910 - MASONRY CLEANING AND RESTORATION.



GoshowArchitects **abb** **Abel Bainson Butz, LLP**

44 West 28th Street, 5 Fl / New York, NY 10001
P 212.242.3735 / F 212.242.7460

DESIGNED KT SCALE AS SHOWN

DRAWN AM

CHECKED MR

SECT. CHIEF FEG

PROJ. ENGR. JC

GENERAL CONSTRUCTION NOTE:
SEE CIVIL AND STRUCTURAL
DRAWINGS FOR COMPLETE SCOPE
OF WORK

CONNETT FLEMING
HAZEN AND SAWYER

480 Seventh Avenue - New York, NY 10018
212.777.4400 - Fax: 212.614.9049

APPROVED FOR THE CITY OF NEW YORK

EXECUTIVE PROJECT MANAGER

CHIEF, UPSTATE WATER SUPPLY TREATMENT & FACILITIES DIVISION

CITY OF NEW YORK
DEPARTMENT OF ENVIRONMENTAL PROTECTION
BUREAU OF ENGINEERING DESIGN & CONSTRUCTION
WM-30 WATERSHED IMPROVEMENTS
RECONSTRUCTION OF
CATSKILL WATERSHED DAMS AND ASSOCIATED FACILITIES

GILBOA DAM AND ASSOCIATED FACILITIES RECONSTRUCTION
CONTRACT CAT-212B
ARCHITECTURAL

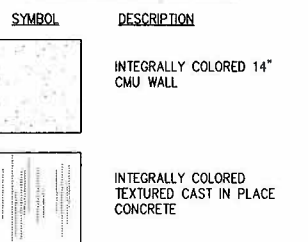
MASONRY RESTORATION DETAILS - SHEET 2 OF 2

90% SUBMITTAL

DATE AUGUST 2009

SHEET NO: A12 OF

DWG NO: A-CW-207



abb

Abel Bainnson Butz, LLP
Landscape Architects | Site Planners

GENERAL CONSTRUCTION NOTE:
SEE CIVIL AND STRUCTURAL
DRAWINGS FOR COMPLETE SCOPE
OF WORK

DESIGNED <u>KT</u>	SCALE AS SHOWN
DRAWN <u>AM</u>	
CHECKED <u>MR</u>	
SECT.CHIEF <u>FEG</u>	
PROJ.ENGR. <u>JC</u>	

SCALE

AS SHOWN

Gannett Fleming
HAZEN AND SAWYER A Joint Venture
498 Seventh Avenue • New York, NY 10018
212 777-8400 • Fax: 212 614-9049

APPROVED FOR THE CITY OF NEW YORK _____ P.E.
EXECUTIVE PROJECT MANAGER

P.E.
CHIEF, UPSTATE WATER SUPPLY TREATMENT
& FACILITIES DIVISION



CITY OF NEW YORK
DEPARTMENT OF ENVIRONMENTAL PROTECTION
BUREAU OF ENGINEERING DESIGN & CONSTRUCTION
WM-30 WATERSHED IMPROVEMENTS
RECONSTRUCTION OF
CATSKILL WATERSHED DAMS AND ASSOCIATED FACILITIES

GILBOA DAM AND ASSOCIATED FACILITIES RECONSTRUCTION
CONTRACT CAT-212B
ARCHITECTURAL

EAST OVERLOOK SECTIONS - SHEET 2 OF 2

DATE	JULY 2009
------	-----------

SHEET NO: A14 OF

DWG NO: A-CW-302

90% SUBMITTAL

D:\proj\000000000001 Gilboa Dam\DWG Construction Documents\CAT-212BArch\Arch\A-CW-303.dwg, 8/21/2009 8:58:03 PM, Adobe PDF, p43

XREFs= CAT211-BORDER, A7-CW-SU, LB-SP-ST
IMAGES= ABB-Logo-Logo.

GoshowArchitects



Abel Bainnon Butz, LLP
Landscape Architects & Site Planners

44 West 28th Street, 5 Fl / New York, NY 10001
P 212.242.3735 / F 212.242.7460

GENERAL CONSTRUCTION NOTE:
SEE CIVIL AND STRUCTURAL
DRAWINGS FOR COMPLETE SCOPE
OF WORK

DESIGNED — KT
DRAWN — AM
CHECKED — MR
SECT. CHIEF — FEG
PROJ. ENGR. — JC

SCALE
AS SHOWN

Gannett Fleming
Hazen and Sawyer
A Joint Venture

498 Seventh Avenue - New York, NY 10018
212.777.8400 - Fax: 212.814.9049

APPROVED FOR THE CITY OF NEW YORK

EXECUTIVE PROJECT MANAGER

CHIEF, UPSTATE WATER SUPPLY TREATMENT
& FACILITIES DIVISION



CITY OF NEW YORK
DEPARTMENT OF ENVIRONMENTAL PROTECTION
BUREAU OF ENGINEERING DESIGN & CONSTRUCTION
WM-30 WATERSHED IMPROVEMENTS
RECONSTRUCTION OF
CATSKILL WATERSHED DAMS AND ASSOCIATED FACILITIES

GILBOA DAM AND ASSOCIATED FACILITIES RECONSTRUCTION
CONTRACT CAT-212B
ARCHITECTURAL

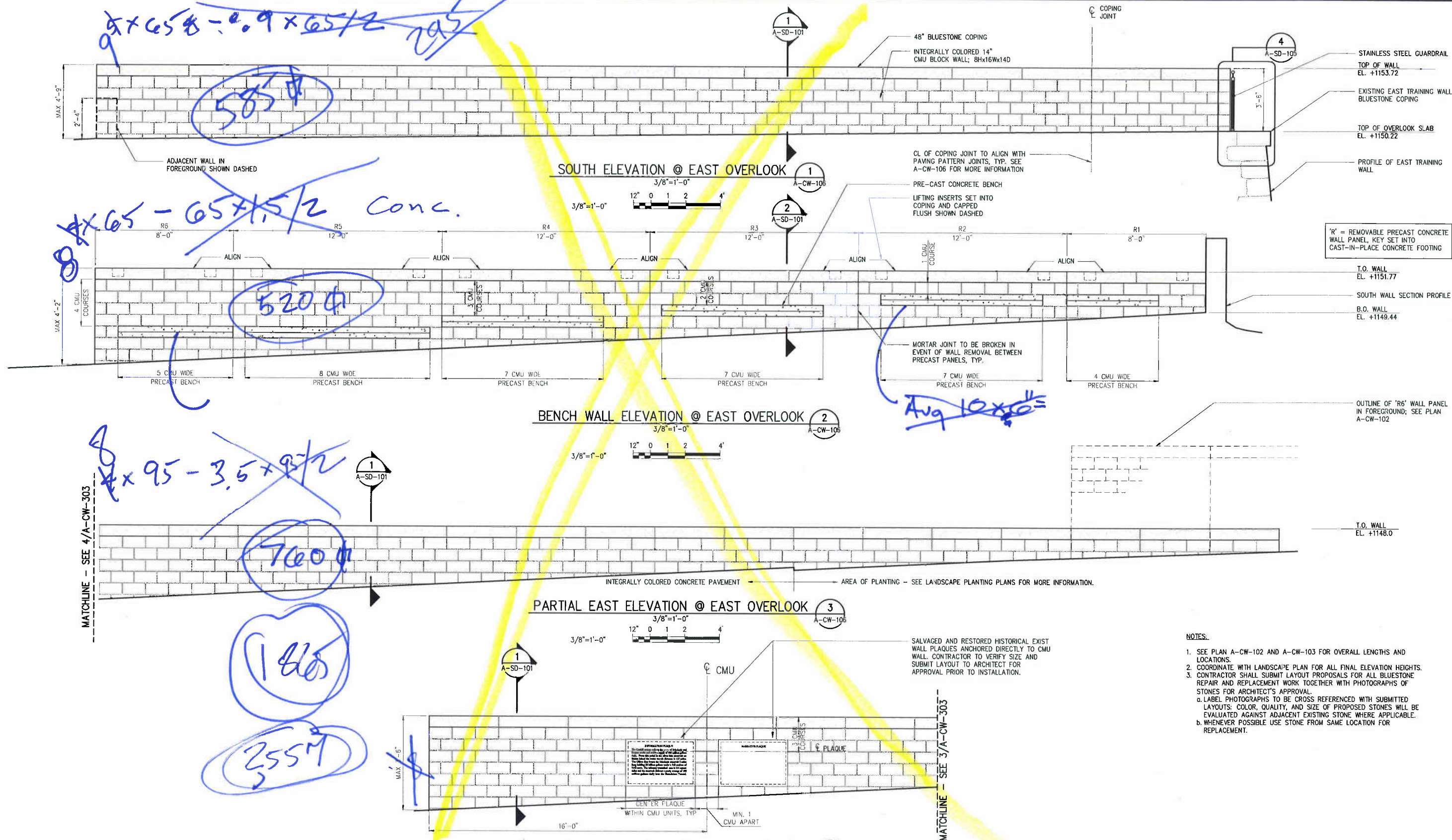
DETAILED EAST OVERLOOK ELEVATIONS - SHEET 1 OF 2

90% SUBMITTAL

DATE AUGUST 2009

SHEET NO: A15 OF

DWG NO: A-CW-303



NOTES:

1. SEE PLAN A-CW-102 AND A-CW-103 FOR OVERALL LENGTHS AND LOCATIONS.
2. COORDINATE WITH LANDSCAPE PLAN FOR ALL FINAL ELEVATION HEIGHTS.
3. CONTRACTOR SHALL SUBMIT LAYOUT PROPOSALS FOR ALL BLUESTONE REPAIR AND REPLACEMENT WORK TOGETHER WITH PHOTOGRAPHS OF STONES FOR ARCHITECT'S APPROVAL.
 - a. LABEL PHOTOGRAPHS TO BE CROSS REFERENCED WITH SUBMITTED LAYOUTS: COLOR, QUALITY, AND SIZE OF PROPOSED STONES WILL BE EVALUATED AGAINST ADJACENT EXISTING STONE WHERE APPLICABLE.
 - b. WHENEVER POSSIBLE USE STONE FROM SAME LOCATION FOR REPLACEMENT.

