

Not Inc: Footings, Concrete walls, excavation, gravel & other fill, back filling, grading & landscaping
Concrete cantilevered benches
Site paving

If truck/crane has to roll this way will paving take load & stabilize?

① 2025 2009 #
② 470 Paving
③ Copying Pins 470 to 638
1330' ÷ 4 x 2 ex end
Blue stone

④ 1040 sq. cmu brick "8x16"

⑤ (4 ea) Slugged Restore Hist. Wall Plaques
± 3' x 2'

⑥ Lifting points eye bolts 4 per panel
24 total

⑦ ss. cap at lifting points assumed continuous 65' x 8" x 1/8" ss plate
in 3 pcs w/ 2 welds.
Grout 1/4" bead 130 LF

⑧ Trash receptacle (1)

⑨ 1050 # 18" DEEP BLUESTONE - 4 250 anchors
⑩ ss. cap flashing 32' ± 6" 10 ga ss w/ 4 bends
+ 64 LF 1/4" bead of caulk
⑪ 9 ss rollers App 18" High ea set on pins

⑫ App 4 cu yd crushed bluestone
⑬ 64 cu ft of bluestone for benches
App 88 sf of App 18" deep bluestone
Doweled
App 175 ss pins mortared in place

GoshowArchitects
44 West 28th Street, 5 Fl / New York, NY 10001
P 212.242.3735 / F 212.242.7460

Abel Bainson Butz, LLP
Landscape Architects | Site Planners

GENERAL CONSTRUCTION NOTE:
SEE CIVIL AND STRUCTURAL
DRAWINGS FOR COMPLETE SCOPE
OF WORK

Gannett Fleming
HAZEN AND SAWYER
495 Seventh Avenue - New York, NY 10018
212.777.8400 • Fax: 212.614.0048

APPROVED FOR THE CITY OF NEW YORK
EXECUTIVE PROJECT MANAGER
CHIEF, UPSTATE WATER SUPPLY TREATMENT & FACILITIES DIVISION



CITY OF NEW YORK
DEPARTMENT OF ENVIRONMENTAL PROTECTION
BUREAU OF ENGINEERING DESIGN & CONSTRUCTION
WM-30 WATERSHED IMPROVEMENTS
RECONSTRUCTION OF
CATSKILL WATERSHED DAMS AND ASSOCIATED FACILITIES

GILBOA DAM AND ASSOCIATED FACILITIES RECONSTRUCTION
CONTRACT CAT-212B
ARCHITECTURAL

EAST OVERLOOK PARTIAL PLAN - SHEET 1 OF 2

DATE AUGUST 2009

SHEET NO: A2 OF

DWG NO: A-CW-102

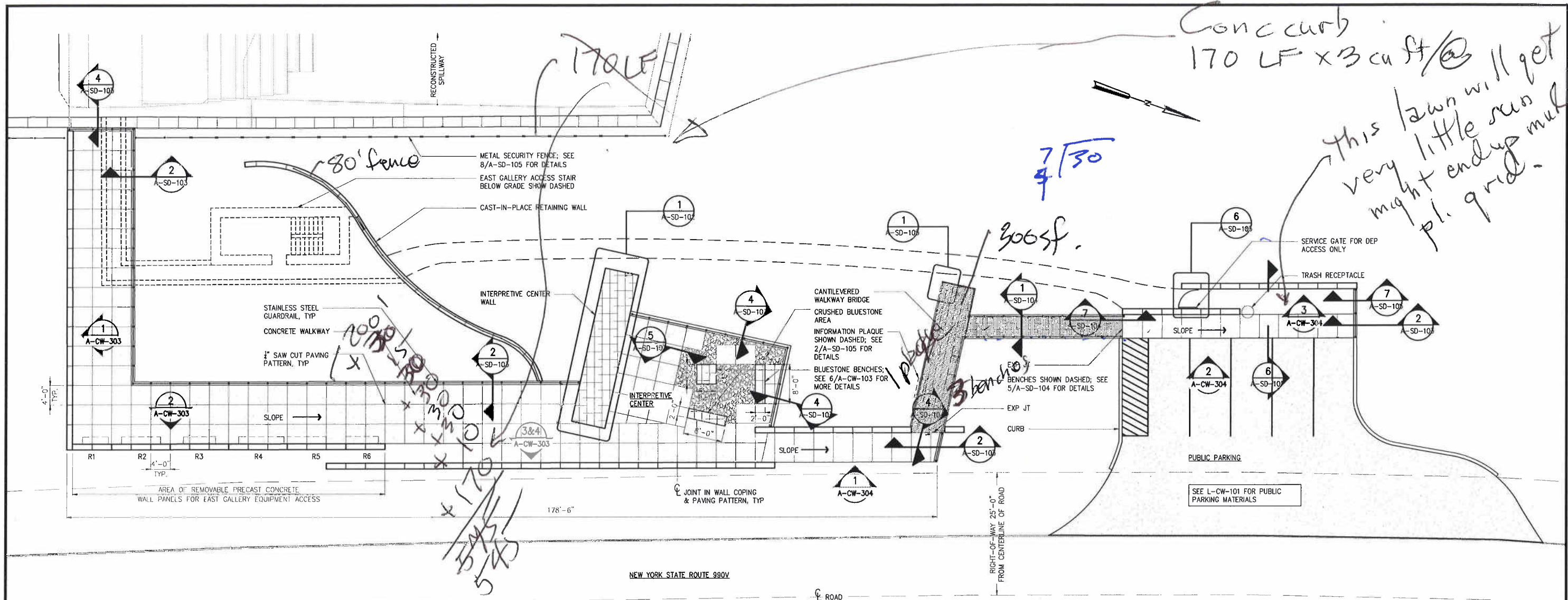
PATTERN LEGEND

SYMBOL	DESCRIPTION
	SALVAGED BLUESTONE (NEW CONSTRUCTION)
	CMU WALL W/ BLUESTONE COPING
	INTEGRALLY COLORED CONCRETE WALKING SURFACE

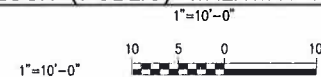
- NOTES:
- 1) SEE A-CW-106 FOR PAVING PATTERNS AND SURFACE MATERIAL INFORMATION.
 - 2) FOR EAST OVERLOOK DEMOLITION INFORMATION REFER TO S-CG-135.
 - 3) ALL SPOT ELEVATIONS SHOWN FOR REFERENCE ONLY. REFER TO LANDSCAPING PLANS FOR NEW GRADING AND PLANTING INFORMATION.
 - 4) COORDINATE WORK FOR EAST GALLERY ACCESS STAIR STRUCTURE WITH ARCHITECTURAL SCOPE. SEE S-CG-143 AND 144 FOR MORE DETAILS.
 - 5) CONTRACTOR SHALL SUBMIT LAYOUT PROPOSALS FOR ALL BLUESTONE WORK TOGETHER WITH PHOTOGRAPHS OF STONE FOR ARCHITECTS APPROVAL.
 - 6) LABEL PHOTOGRAPHS TO BE CROSS REFERENCED WITH SUBMITTED LAYOUTS - COLOR, QUALITY, AND SIZE SHALL BE EVALUATED.

90% SUBMITTAL

D:\Proj\2006\0821_Gilboa Dam\X CAD\X00 Construction Documents\CAT-212B Arch\A-CW-102.dwg, 8/21/2009 8:52:11 PM, Adobe PDF, pcd
XREFS: LB-SF-SI, CA-2121-B00000, AN-SF-SI, AX-SF-SI-1130
IMAGES: ABB-ACGD-Logo



EAST OVERLOOK (PUBLIC) WALKWAY AREA PAVING PLAN 1



- NOTES:
- 1) REFER TO LANDSCAPING PLANS FOR NEW GRADING AND PLANTING INFORMATION.
 - 2) ALL CONCRETE WALKWAYS TO BE BROOM FINISHED, AND 1" SAW-CUT PATTERNS INTO INTEGRALLY COLORED SLAB. JOINT DEPTH TO BE A MINIMUM 1/4 OF THE SLAB THICKNESS BUT NO LESS THAN 1".
 - 3) EXPANSION JOINTS TYPICAL AT ALL SLAB EDGES WHICH MEET WALLS, FOOTINGS, OR WALKWAY MATERIAL CHANGES, TYP.

PATTERN LEGEND

SYMBOL	DESCRIPTION
	WALKWAY
	PARKING SURFACE
	SALVAGED BLUESTONE (NEW CONSTRUCTION)
	METAL GRATING
	CRUSHED BLUESTONE

GoshowArchitects **abb** Abel Bainson Butz, LLP
 44 West 28th Street, 5th Floor, New York, NY 10001
 P 212.242.3735 / F 212.242.7460

GENERAL CONSTRUCTION NOTE:
 SEE CIVIL AND STRUCTURAL
 DRAWINGS FOR COMPLETE SCOPE
 OF WORK

NO.	DATE	ISSUED FOR	BY

DESIGNED	KT
DRAWN	MW
CHECKED	MR
SECT. CHIEF	FEG
PROJ. ENGR.	JC

SCALE
 AS SHOWN

Gannett Fleming
Hazen and Sawyer A Joint Venture
 498 Seventh Avenue, New York, NY 10018
 212.777.8400 Fax 212.814.9049

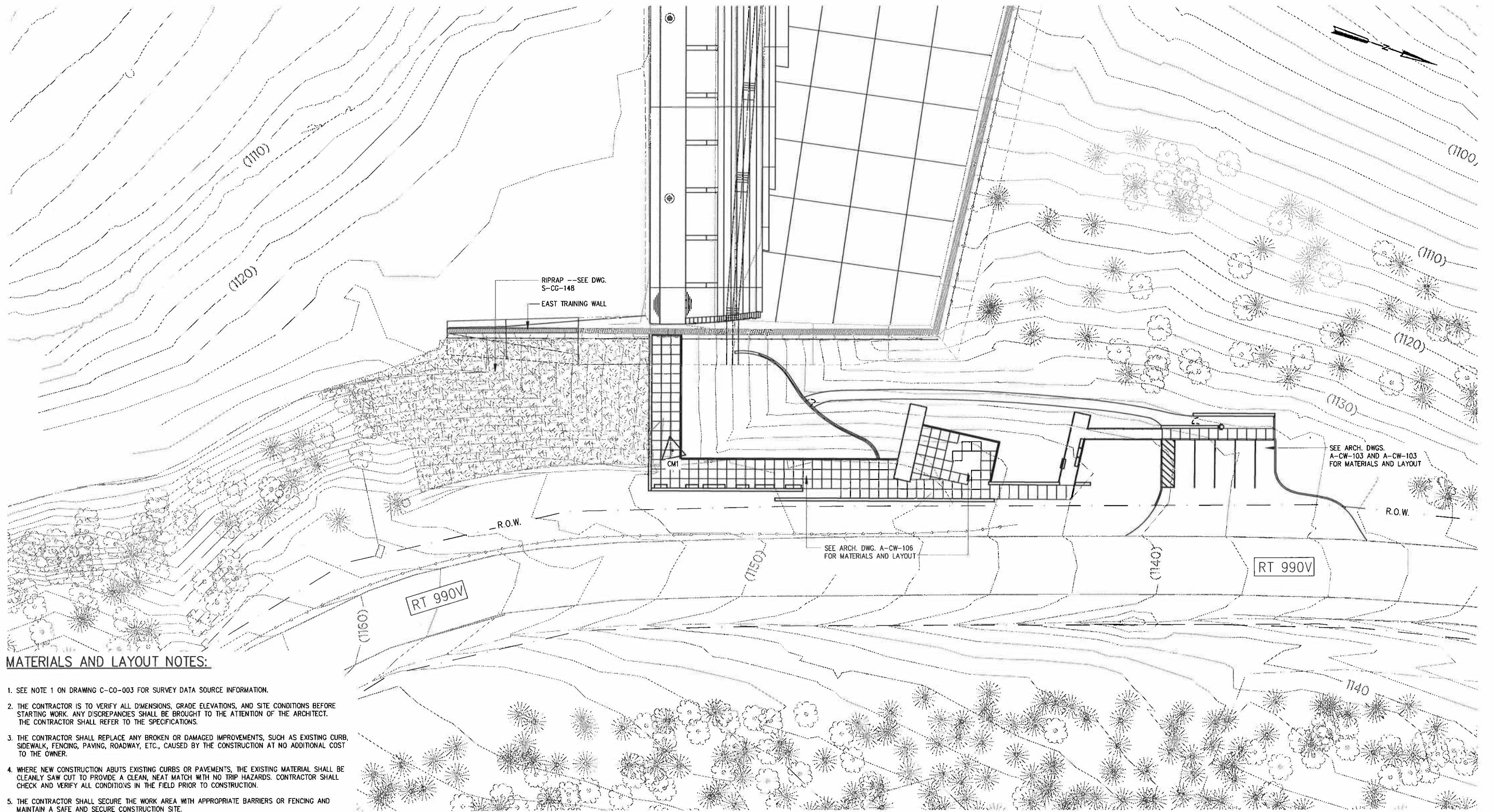
APPROVED FOR THE CITY OF NEW YORK
 EXECUTIVE PROJECT MANAGER
 CHIEF, UPSTATE WATER SUPPLY TREATMENT & FACILITIES DIVISION



CITY OF NEW YORK
 DEPARTMENT OF ENVIRONMENTAL PROTECTION
 BUREAU OF ENGINEERING DESIGN & CONSTRUCTION
 WM-30 WATERSHED IMPROVEMENTS
 RECONSTRUCTION OF
 CATSKILL WATERSHED DAMS AND ASSOCIATED FACILITIES

GILBOA DAM AND ASSOCIATED FACILITIES RECONSTRUCTION
 CONTRACT CAT-212B
 ARCHITECTURAL
 EAST OVERLOOK PAVING PLAN

90% SUBMITTAL
 DATE AUGUST 2009
 SHEET NO: A6 OF
 DWG NO: A-CW-106



MATERIALS AND LAYOUT NOTES:

1. SEE NOTE 1 ON DRAWING C-CO-003 FOR SURVEY DATA SOURCE INFORMATION.
2. THE CONTRACTOR IS TO VERIFY ALL DIMENSIONS, GRADE ELEVATIONS, AND SITE CONDITIONS BEFORE STARTING WORK. ANY DISCREPANCIES SHALL BE BROUGHT TO THE ATTENTION OF THE ARCHITECT. THE CONTRACTOR SHALL REFER TO THE SPECIFICATIONS.
3. THE CONTRACTOR SHALL REPLACE ANY BROKEN OR DAMAGED IMPROVEMENTS, SUCH AS EXISTING CURB, SIDEWALK, FENCING, PAVING, ROADWAY, ETC., CAUSED BY THE CONSTRUCTION AT NO ADDITIONAL COST TO THE OWNER.
4. WHERE NEW CONSTRUCTION ABUTS EXISTING CURBS OR PAVEMENTS, THE EXISTING MATERIAL SHALL BE CLEANLY SAW CUT TO PROVIDE A CLEAN, NEAT MATCH WITH NO TRIP HAZARDS. CONTRACTOR SHALL CHECK AND VERIFY ALL CONDITIONS IN THE FIELD PRIOR TO CONSTRUCTION.
5. THE CONTRACTOR SHALL SECURE THE WORK AREA WITH APPROPRIATE BARRIERS OR FENCING AND MAINTAIN A SAFE AND SECURE CONSTRUCTION SITE.
6. FOR NOTES, DETAILS, AND HOOK-UP REGARDING ELECTRICAL ITEMS, SEE ELECTRICAL DRAWINGS.

EAST OVERLOOK OVERALL PLAN
1"=20'

1"=20'-0" 20 10 0 20'

GoshowArchitects

44 West 28th Street, 5 Fl / New York, NY 10001
P 212.242.3735 / F 212.242.7460



Abel Bainnson Butz, LLP
Landscape Architects | Site Planners

NO.	DATE	ISSUED FOR	BY

WARNING:
IT IS A VIOLATION OF SECTION 2209.2 OF
THE NEW YORK STATE EDUCATION LAW
FOR ANY PERSON, UNLESS ACTING UNDER
THE DIRECTION OF A LICENSED PROFESSIONAL
ENGINEER, TO ALTER IN ANY MANNER
SPECIFICATIONS, PLANS OR REPORTS TO
WHICH THE SEAL OF A PROFESSIONAL ENGINEER
HAS BEEN APPLIED. IF AN INDIVIDUAL SEALING
THE SEAL OF A PROFESSIONAL ENGINEER IS ALTERED,
THE ALTERING ENGINEER SHALL AFFIX TO THE
NEW SEAL AND THE ALTERATION "ALTERED BY"
FOLLOWED BY HIS SIGNATURE, THE DATE, AND
A SPECIFIC DESCRIPTION OF THE ALTERATION.

DESIGNED DW
DRAWN PMc
CHECKED JB
SECT. CHIEF FEG
PROJ. ENGR. JC

SCALE
1"=20'

P.E.

Gunnnett Fleming
Hazen and Sawyer A Joint Venture
496 Seventh Avenue • New York, NY 10018
212.777.8400 • Fax: 212.914.9049

APPROVED FOR THE CITY OF NEW YORK
EXECUTIVE PROJECT MANAGER
P.E.
CHIEF, UPSTATE WATER SUPPLY TREATMENT
& FACILITIES DIVISION



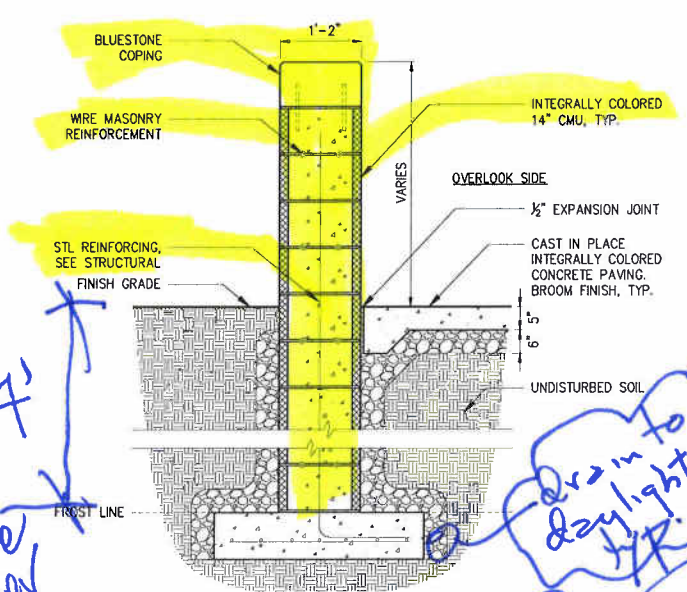
CITY OF NEW YORK
DEPARTMENT OF ENVIRONMENTAL PROTECTION
BUREAU OF ENGINEERING DESIGN & CONSTRUCTION
WM-30 WATERSHED IMPROVEMENTS
RECONSTRUCTION OF
CATSKILL WATERSHED DAMS AND ASSOCIATED FACILITIES

**GILBOA DAM AND ASSOCIATED FACILITIES RECONSTRUCTION
CONTRACT CAT-212B**

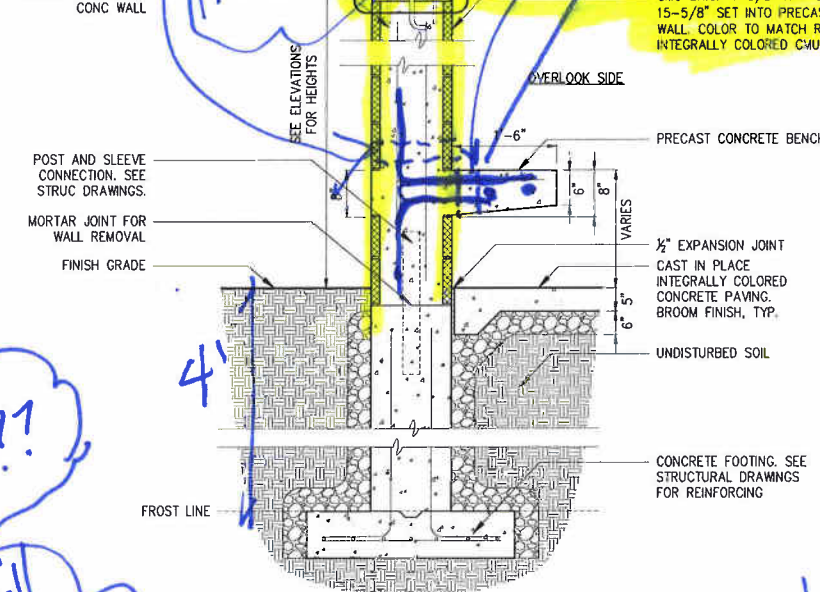
**LANDSCAPE
EAST OVERLOOK OVERALL PLAN**

90% SUBMITTAL

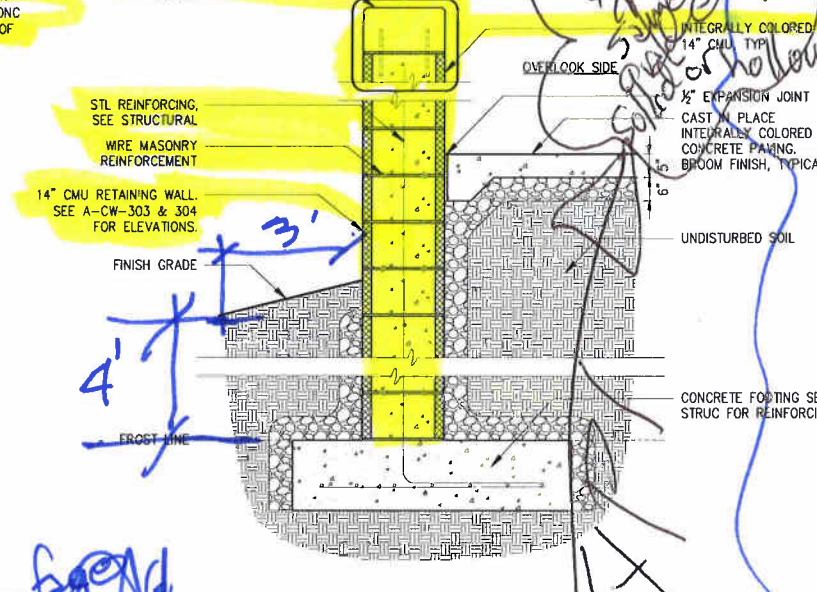
DATE AUGUST 2009
SHEET NO: 120 OF 145
DWG NO: L-CW-101



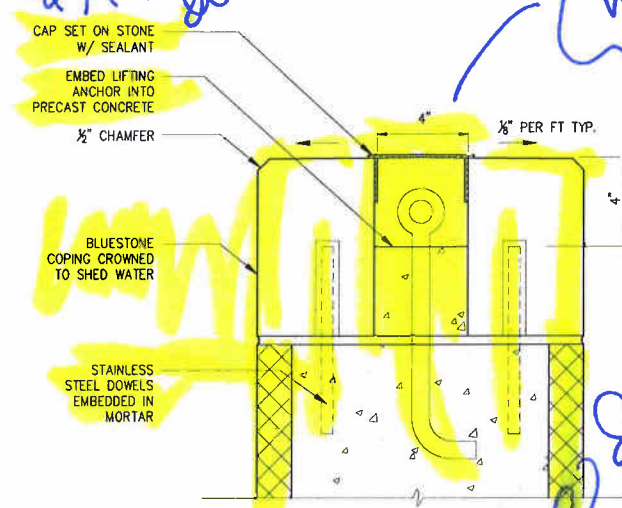
DETAIL 1
3/4"=1'-0" A-CW-303



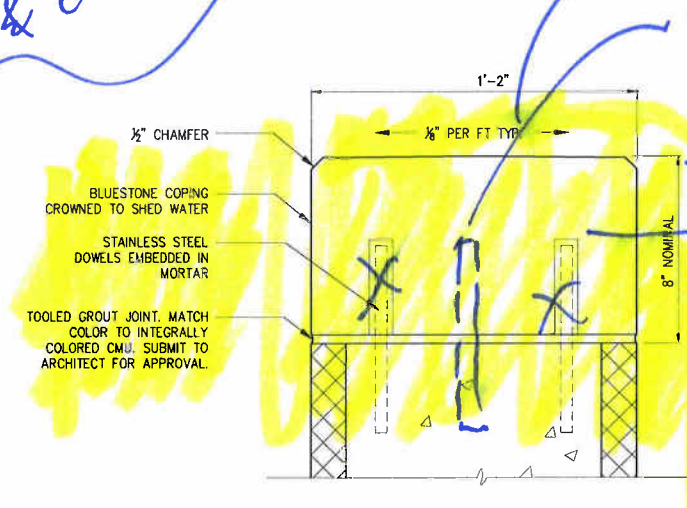
DETAIL 2
3/4"=1'-0" A-CW-304



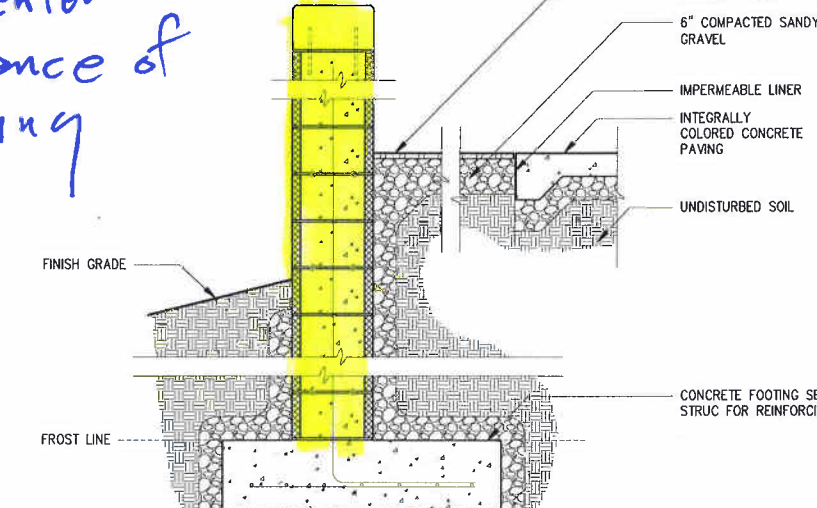
DETAIL 3
3/4"=1'-0" A-CW-304



DETAIL 4
3/4"=1'-0" A-CW-303



DETAIL 5
3/4"=1'-0" A-CW-303



DETAIL 6
3/4"=1'-0" A-CW-303

*spacing double leads
drains for built
up water level
snow will create
ice dam at edge
creating a "pond"
double as
lifting point.
Cheaper to
might cast in place
SS tube lining
if you like the look
its an off center
lift no matter
where the lifting
points are*

*heavy rebar 12" oc
2" holes 4" oc 4 per bench equal*

*or more
wherever
frost line is
see
also
get 2, 3, 4*

*Drain to fill
daylight??
It's going to fill
with water &
freeze & crack*

*slope to outer face
to water & away from wall
one in center
less chance of
cracking
4" min*

GENERAL NOTES:

1. CONTRACTOR TO SUBMIT LAYOUT PROPOSALS FOR ALL SALVAGED BLUESTONE MATERIAL TOGETHER WITH PHOTOGRAPHS OF STONES FOR ARCHITECTS APPROVAL. LABEL PHOTOGRAPHS TO BE CROSS-REFERENCED WITH SUBMITTED LAYOUTS; COLOR, QUALITY, AND SIZE WILL BE EVALUATED.
2. SEE STRUCTURAL DRAWINGS FOR TYPICAL REINFORCING, FOOTINGS, AND RETAINING WALL DETAILS.

90% SUBMITTAL

GoshowArchitects

abb

Abel Bainnson Butz, LLP
Landscape Architects | Site Planners

44 West 28th Street, 5 R / New York, NY 10001
P 212.242.7735 / F 212.242.7460

GENERAL CONSTRUCTION NOTE:
SEE CIVIL AND STRUCTURAL
DRAWINGS FOR COMPLETE SCOPE
OF WORK

Gannett Fleming
HAZEN AND SAWYER A Joint Venture
498 Seventh Avenue - New York, NY 10018
212.777-8400 - Fax: 212.614-9049

APPROVED FOR THE CITY OF NEW YORK
EXECUTIVE PROJECT MANAGER
CHIEF, UPSTATE WATER SUPPLY TREATMENT
& FACILITIES DIVISION



CITY OF NEW YORK
DEPARTMENT OF ENVIRONMENTAL PROTECTION
BUREAU OF ENGINEERING DESIGN & CONSTRUCTION
WM-30 WATERSHED IMPROVEMENTS
RECONSTRUCTION OF
CATSKILL WATERSHED DAMS AND ASSOCIATED FACILITIES

GILBOA DAM AND ASSOCIATED FACILITIES RECONSTRUCTION
CONTRACT CAT-212B
ARCHITECTURAL
DAM RECONSTRUCTION

DETAILS 1 OF 5

DATE AUGUST 2009

SHEET NO: A17 OF

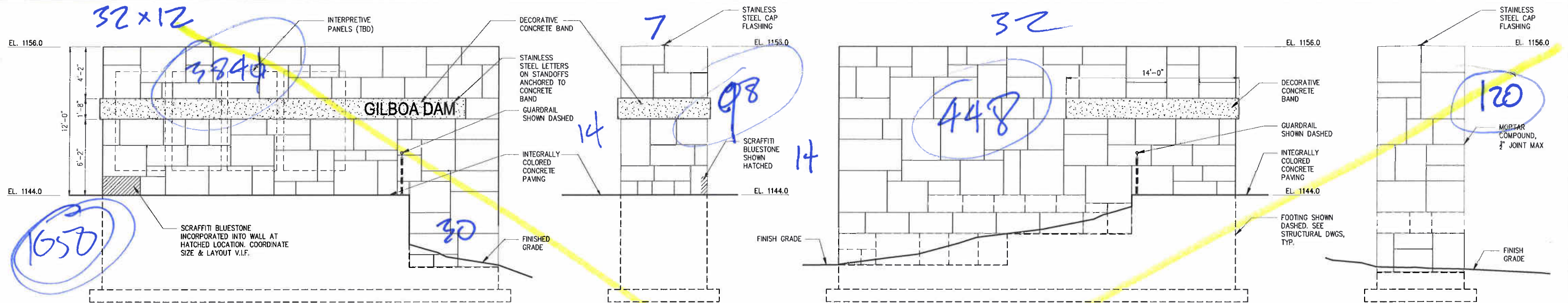
DWG NO: A-SD-101

NO.	DATE	ISSUED FOR	BY

IT IS A VIOLATION OF SECTION 2209.2 OF THE NEW YORK STATE EDUCATION LAW FOR ANY PERSON, UNLESS ACTING UNDER THE DIRECTION OF A LICENSED PROFESSIONAL ENGINEER, TO ALTER IN ANY MANNER, SPECIFICATIONS, PLANS OR REPORTS TO WHICH THE SEAL OF A PROFESSIONAL ENGINEER HAS BEEN APPLIED. IF AN INDIVIDUAL BEARING THE SEAL OF A PROFESSIONAL ENGINEER ALTERS THE ALTERNING ENGINEER'S SEAL AFTER HE HAS GIVEN HIS SEAL AND THE NOTATION "ALTERED BY" FOLLOWED BY HIS SIGNATURE, THE DATE AND A SPECIFIC DESCRIPTION OF THE ALTERATION.

DESIGNED	KT
DRAWN	LAE
CHECKED	MR
SECT.CHIEF	FEG
PROJ.ENGR.	JC

SCALE	AS SHOWN



INTERPRETIVE WALL NORTH ELEVATION

DETAIL 2
1/4"=1'-0"

INTERPRETIVE WALL EAST ELEVATION

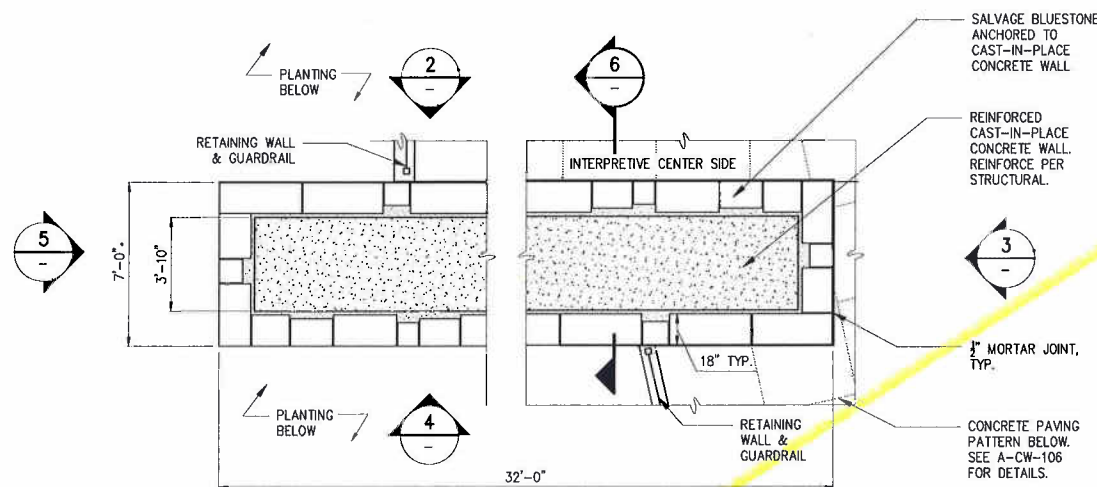
DETAIL 3
1/4"=1'-0"

INTERPRETIVE WALL SOUTH ELEVATION

DETAIL 4
1/4"=1'-0"

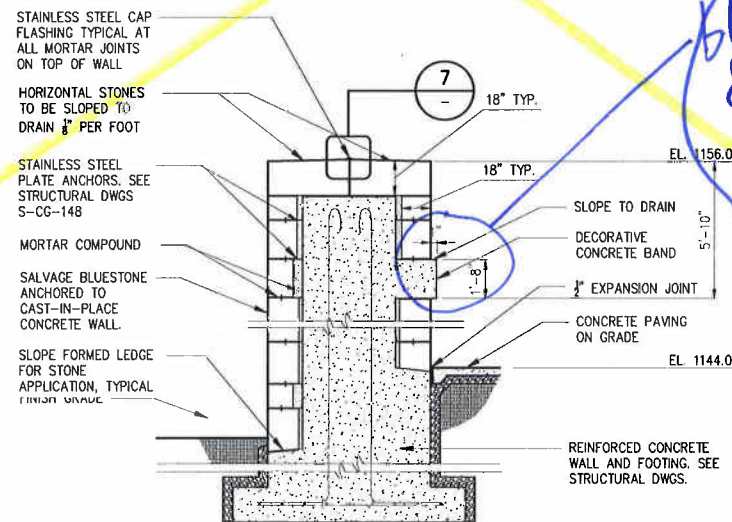
INTERPRETIVE WALL WEST ELEVATION

DETAIL 5
1/4"=1'-0"



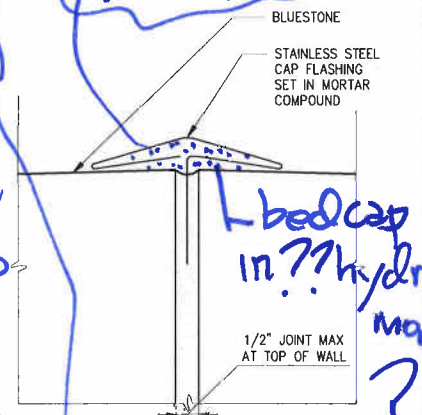
INTERPRETIVE WALL ENLARGED PLAN

DETAIL 1
1/2"=1'-0" A-CW-106



INTERPRETIVE WALL SECTION

DETAIL 6
1/2"=1'-0"



METAL FLASHING

DETAIL 7
6"=1'-0"

*blow up hard to read
if you want chambers
on corners. If you
want a fine finish
you'll need to spec it
& refer to it here
fine finish in offset
on a big pour like
this. might want to
cost separately?*

- NOTE:
- COORDINATE WITH LANDSCAPE PLAN FOR ALL FINAL ELEVATION HEIGHTS.
 - CONTRACTOR TO SUBMIT LAYOUT PROPOSALS FOR ALL BLUESTONE. WORK TOGETHER WITH PHOTOGRAPHS OF STONES FOR ARCHITECT'S APPROVAL.
 - PLEASE LABEL PHOTOGRAPHS TO BE CROSS REFERENCED WITH SUBMITTED LAYOUTS; COLOR, QUALITY, AND SIZE OF PROPOSED STONES WILL BE EVALUATED.
 - PRIORITIZE LARGEST SALVAGED STONES FOR INTERPRETIVE CENTER WALL AND BENCHES.

GoshowArchitects

abb

Abel Bainnson Butz, LLP
Landscape Architects | Site Planners

44 West 28th Street, 5th Floor, New York, NY 10001
P 212.242.3735 / F 212.242.7460

GENERAL CONSTRUCTION NOTE:
SEE CIVIL AND STRUCTURAL
DRAWINGS FOR COMPLETE SCOPE
OF WORK

DESIGNED KT
DRAWN LAE
CHECKED MR
SECT. CHIEF FEG
PROJ. ENGR. JC

SCALE
AS SHOWN

Gannett Fleming
HAZEN AND SAWYER A Joint Venture
498 Seventh Avenue - New York, NY 10018
212 777-8400 - Fax: 212 814-9049

APPROVED FOR THE CITY OF NEW YORK
EXECUTIVE PROJECT MANAGER
P.E.
CHIEF, UPSTATE WATER SUPPLY TREATMENT
& FACILITIES DIVISION



CITY OF NEW YORK
DEPARTMENT OF ENVIRONMENTAL PROTECTION
BUREAU OF ENGINEERING DESIGN & CONSTRUCTION
WM-30 WATERSHED IMPROVEMENTS
RECONSTRUCTION OF
CATSKILL WATERSHED DAMS AND ASSOCIATED FACILITIES

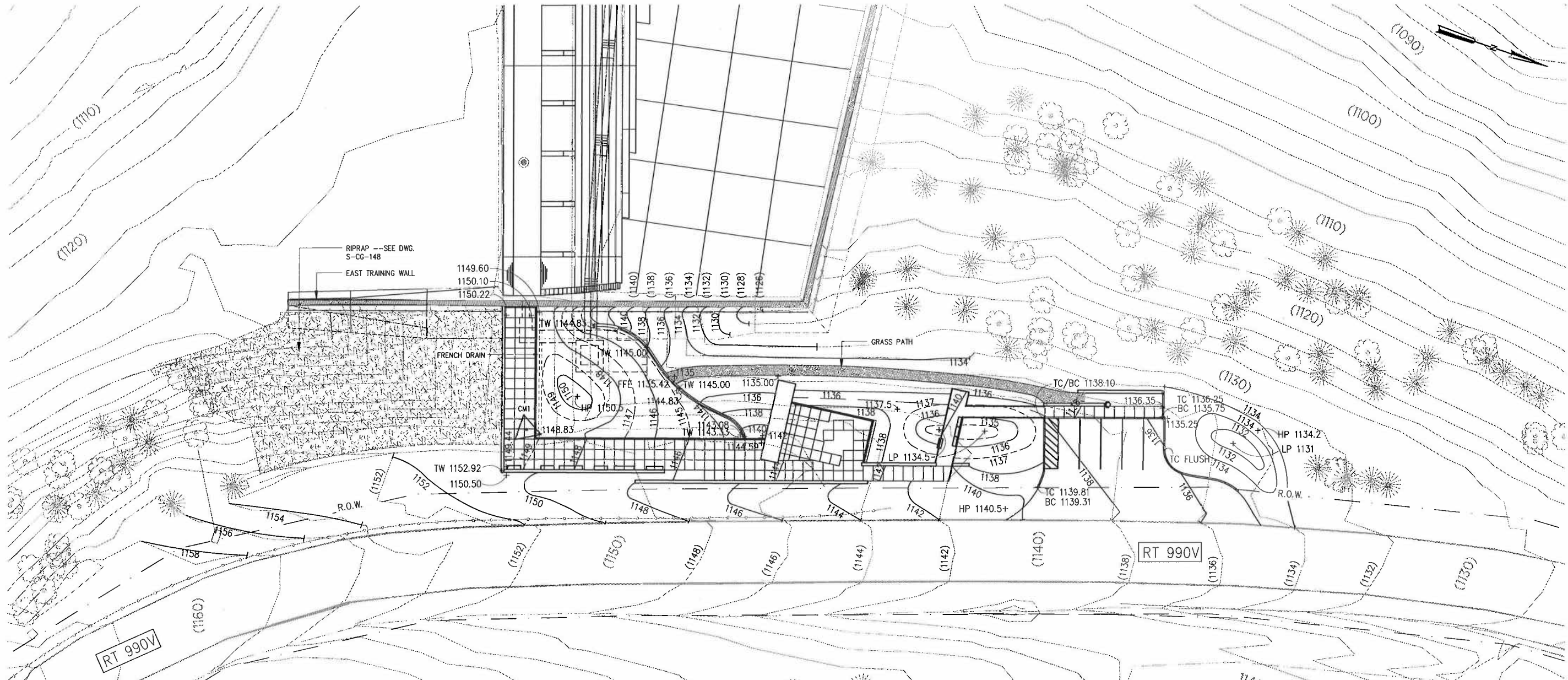
GILBOA DAM AND ASSOCIATED FACILITIES RECONSTRUCTION
CONTRACT CAT-212B
ARCHITECTURAL
DAM RECONSTRUCTION
DETAILS - SHEET 2 OF 5

90% SUBMITTAL

DATE AUGUST 2009

SHEET NO: A18 OF

DWG NO: A-SD-102



GRADING NOTES:

1. REFER TO TOPOGRAPHIC SURVEY FOR EXISTING UTILITIES AND ELEVATIONS. IT SHALL BE THE CONTRACTOR'S RESPONSIBILITY TO DETERMINE THE EXACT LOCATION OF ANY UTILITY LINES AND PROTECT THEM UNLESS REMOVAL IS INDICATED.
2. ALL LAYOUT LINES AND LEVELS SHALL BE PERFORMED BY A NEW YORK STATE LICENSED LAND SURVEYOR.
3. PREPARE SUB-GRADE ELEVATIONS TO SUFFICIENT DEPTH TO INSURE NEW IMPROVEMENTS WHEN INSTALLED MEET EXISTING MATERIALS SMOOTHLY, EVENLY AND TO GRADE.
4. IN ALL CASES, PAVEMENTS SHALL BE PITCHED TO STORMWATER COLLECTION AREAS OR DRAINS TO PREVENT PUDDLING AND PONDING.
5. LOCATE NEW DRAINAGE STRUCTURES AT TRUE LOW POINTS OF THEIR RESPECTIVE AREAS AS DETERMINED IN THE FIELD AND BY THE OWNER'S REPRESENTATIVE.
6. CLEAN ALL EXISTING AND NEW DRAINAGE STRUCTURES AND PIPES ON-SITE AT PROJECT COMPLETION.

GRADING PLAN
1"=20'

LEGEND

EXISTING RIGHT OF WAY	R.O.W.
EXISTING GUIDERAIL	
EXISTING CONTOUR 2' INTERVAL	(1100)
EXISTING CONTOUR 10' INTERVAL	(1130)
PROPOSED CONTOUR - INDEX	1100
PROPOSED CONTOUR - INTERMEDIATE	1101
SPOT ELEVATION	+ 1100
HP= HIGH POINT	+ HP
LP= LOW POINT	+ LP
TC= TOP OF CURB	+ TC
BC= BOTTOM OF CURB	+ BC



GoshowArchitects



Abel Bainnson Butz, LLP
Landscape Architects | Site Planners

44 West 28th Street, 5 Fl / New York, NY 10001
P 212.242.3735 / F 212.242.7460

WARNING:
IT IS A VIOLATION OF SECTION 2203.2 OF
THE NEW YORK STATE EDUCATION LAW
FOR ANY PERSON, UNLESS ACTING UNDER
THE DIRECTION OF A LICENSED PROFESSIONAL
ENGINEER, TO ALTER IN ANY MANNER PLANS,
SPECIFICATIONS, PLANS OR REPORTS TO
WHICH THE SEAL OF A PROFESSIONAL ENGINEER
HAS BEEN AFFIXED, IF ANY, FOR BEARING THE
SEAL OF A PROFESSIONAL ENGINEER. IF THE
ALTERNATE ENGINEER SIGNATURE IS ALTERED,
THE ALTERNATE ENGINEER SHALL AFFIX TO THE
NEW SEAL AND THE NOTATION "ALTERED BY"
FOLLOWED BY HIS SIGNATURE, THE DATE, AND
A SPECIFIC DESCRIPTION OF THE ALTERATION.

DESIGNED	DW
DRAWN	PMc
CHECKED	JB
SECT. CHIEF	FEG
PROJ. ENGR.	JC

Gannett Fleming
HAZEN AND SAWYER
A Joint Venture
498 Seventh Avenue - New York, NY 10018
212.777.9400 - Fax: 212.814.9049

APPROVED FOR THE CITY OF NEW YORK
EXECUTIVE PROJECT MANAGER
P.E.
CHIEF, UPSTATE WATER SUPPLY TREATMENT
& FACILITIES DIVISION



CITY OF NEW YORK
DEPARTMENT OF ENVIRONMENTAL PROTECTION
BUREAU OF ENGINEERING DESIGN & CONSTRUCTION
WM-30 WATERSHED IMPROVEMENTS
RECONSTRUCTION OF
CATSKILL WATERSHED DAMS AND ASSOCIATED FACILITIES

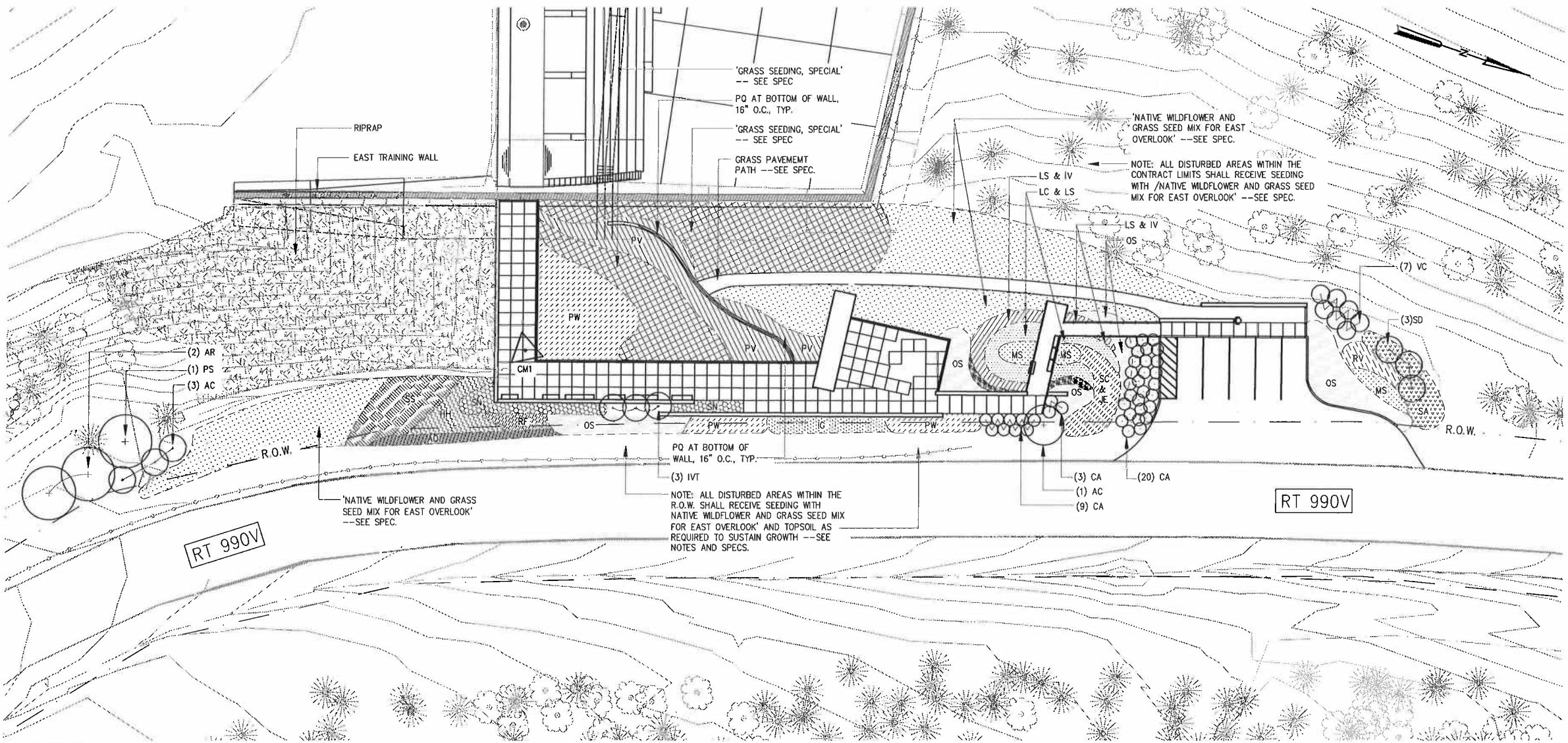
GILBOA DAM AND ASSOCIATED FACILITIES RECONSTRUCTION
CONTRACT CAT-212B

LANDSCAPE
GRADING PLAN

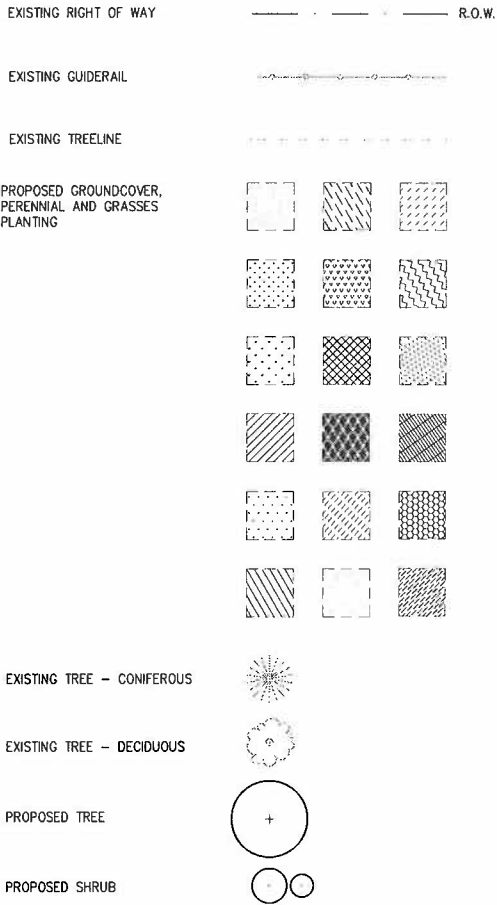
90% SUBMITTAL

DATE	AUGUST 2009
SHEET NO:	121 OF 145
DWG NO:	L-CW-102

XREF's= CA121-BORDER, LB-SF-ST, LX-TP, CAlogo
IMAGES= ABB-Acad-Logo.



LEGEND



PLANTING PLAN
1"=20'

PLANTING NOTES

- ALL PLANT MATERIAL TO BE VIGOROUS, FREE OF INJURY OR DEFECTS. ALL PLANT MATERIAL SHALL BE STOCK FROM A RECOGNIZED NURSERY WITHIN THE NORTHEAST REGION.
- ALL B&B MATERIAL IS TO HAVE BALL/PLANT SIZE RELATIONSHIP AS SPECIFIED BY THE AMERICAN ASSOCIATION OF NURSURYMEN, LATEST EDITION.
- ALL SHRUB BEDS, UNLESS OTHERWISE NOTED, SHALL BE MULCHED WITH MULCH/LEAF COMPOST AS SPECIFIED.
- NO SUBSTITUTION WILL BE ACCEPTED UNLESS AUTHORIZED BY THE LANDSCAPE ARCHITECT.
- THE LANDSCAPE ARCHITECT MAY REJECT ANY MATERIAL WHICH DOES NOT REPRESENT SPECIES AS OUTLINED IN PLANT LIST.
- ALL TREES AND SHRUBS TO BE PLANTED 3'-0" MIN. FROM DRAINAGE STRUCTURES AND DRAINAGE LINES. CONTRACTOR SHALL BE RESPONSIBLE FOR VERIFYING LOCATION OF DRAINAGE STRUCTURES ON SITE.
- THE CONTRACTOR SHALL EXCAVATE AS NEEDED AND PROVIDE TOPSOIL TO ACHIEVE FINISHED GRADES IN ALL PLANTED AREAS. TOPSOIL SHALL BE AS INDICATED IN SITE DETAILS OR A MINIMUM DEPTH OF 9" FOR GRASSES AND GROUNDCOVERS, WHATEVER IS GREATER.
- ALL EXISTING ON-SITE TREES WITHIN THE PROJECT LIMIT LINE SHALL BE PRUNED.
- APPROPRIATE EROSION CONTROL MEASURES SHALL BE INSTALLED AND MAINTAINED AT ALL TIMES AS PER SPECIFICATIONS.
- EXISTING TOPSOIL STRIPPED AND STORED FOR REUSE SHALL BE AMENDED TO MEET THE REQUIREMENTS OF NEW TOPSOIL.
- NO HERBICIDES SHALL BE ALLOWED.
- NO FERTILIZER SHALL BE APPLIED UNLESS SPECIFICALLY REQUIRED IN DETAILED SPECIFICATION.

PLANT LIST

QTY.	KEY	BOTANICAL NAME	COMMON NAME	SIZE	SPACING
MAJOR TREES					
2	AR	ACER RUBRUM	RED MAPLE	2-2.5" CAL	AS SHOWN
X	BP	BETULA Papyrifera	PAPER BIRCH	7-8"	AS SHOWN
1	PS	PINUS STROBUS	WHITE PINE	7-8"	AS SHOWN
SHRUBS					
4	AC	AMELANCHIER CANADENSIS	SHADBUSH	6-7"	AS SHOWN
X	CO	CEPHALANTHUS OCCIDENTALIS	BUTTONBUSH	1 GAL	30" O.C.
32	CA	CLETHRA ALNIFOLIA	SWEET PEPPERBUSH	24-30"	AS SHOWN
36	IG	ILEX GLABRA 'SHAMROCK'	INKBERRY	3 GAL	30" O.C.
3	IVT	ILEX VERTICILLATA	WINTERBERRY	5 GAL	AS SHOWN
X	KA	KALMIA ANGUSTIFOLIA	SHEEP LAUREL	12-16"	AS SHOWN
23	RV	RHODODENDRON VISCOSUM	SWAMP AZALEA	1 GAL	30" O.C.
3	SD	SALIX DISCOLOR	PUSSY WILLOW	1 GAL	AS SHOWN
X	VA	VACCINIUM ANGUSTIFOLIUM	BLUEBERRY	1 GAL	AS SHOWN
7	VC	VIBURNUM CASSENOIDES	WITHEROD VIBURNUM	1 GAL	30" O.C.
GROUNDCOVER, PERENNIALS & GRASSES					
168	AQ	AQUILEGIA CANADENSIS	COLUMBINE	1 GAL	1 GAL
X	CL	CAREX LURIDA	SHALLOW SEDGE	1 QT	15" O.C.
X	CP	CAREX PENNSYLVANICA	PENNSYLVANIA SEDGE	TRAY	10" O.C.
64	HH	HELIOPSIS HELIANTHOIDES	FALSE SUNFLOWER	1 GAL	2' O.C.

GROUNDCOVER, PERENNIALS & GRASSES					
85	IV	IRIS VERSICOLOR	NORTHERN BLUE IRIS	1 QT	15" O.C.
106	JE	JUNCUS EFFUSUS	SOFT RUSH	1 QT	15" O.C.
128	LC	LILIUM CANADENSE	CANADA LILLY	1 QT	12" O.C.
240	LS	LILIUM SUPERBUM	TURK'S CAP	1 QT	12" O.C.
54	LO	LOBELIA SIPHILITICA	GREAT BLUE LOBELIA	1 GAL	15" O.C.
53	MS	MATTEUCCIA STRUTHIOPTERIS	OSTRICH FERN	1 GAL	2' O.C.
286	OS	ONOCLEA SENSIBILIS	SENSITIVE FERN	1 GAL	2' O.C.
X	OR	OSMUNDA REGALIS	ROYAL FERN	1 GAL	2' O.C.
52	RF	RUDBECKIA FULGIDA VAR. FULGIDA	BROWN-EYED SUSAN	1 GAL	18" O.C.
225	PV	PANICUM VIRGATUM 'HEAVY METAL'	'HEAVY METAL' SWITCHGRASS	1 GAL	2' O.C.
304	PW	PANICUM VIRGATUM 'WARRIOR'	'WARRIOR' SWITCHGRASS	1 GAL	2' O.C.
217	SS	SCHIZACHIRUM SCOPARIUM 'THE BLUES'	LITTLE BLUESTEM	1 GAL	18" O.C.
253	SA	SCIRPUS ATROVIRENS	GREEN BULRUSH	1 QT	15" O.C.
141	SC	SCIRPUS CYPERNUS	WOOL GRASS	1 QT	12" O.C.
150	SN	SYMPHOTRICHUM NOVAE-ANGLIAE 'ALMA POTSCHKE'	'ALMA POTSCHKE' NEW ENGLAND ASTER	1 GAL	18" O.C.

GoshowArchitects **abb** Abel Bainnson Butz, LLP
44 West 28th Street, 5 Fl / New York, NY 10001
P 212.242.3735 / F 212.242.7460

DESIGNED DW
DRAWN PMc
CHECKED JB
SECT. CHIEF FEG
PROJ. ENGR JC

Gannett Fleming
Hazen and Sawyer A Joint Venture
498 Seventh Avenue - New York, NY 10018
212.777-9400 - Fax: 212.614-9049

APPROVED FOR THE CITY OF NEW YORK
EXECUTIVE PROJECT MANAGER
P.E.
CHIEF, UPSTATE WATER SUPPLY TREATMENT & FACILITIES DIVISION

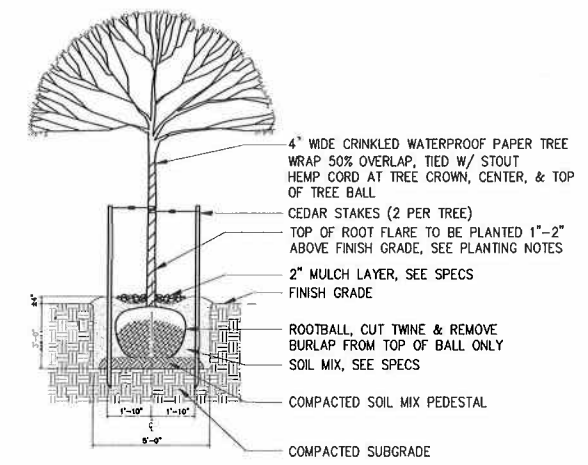


CITY OF NEW YORK
DEPARTMENT OF ENVIRONMENTAL PROTECTION
BUREAU OF ENGINEERING DESIGN & CONSTRUCTION
WM-30 WATERSHED IMPROVEMENTS
RECONSTRUCTION OF
CATSKILL WATERSHED DAMS AND ASSOCIATED FACILITIES

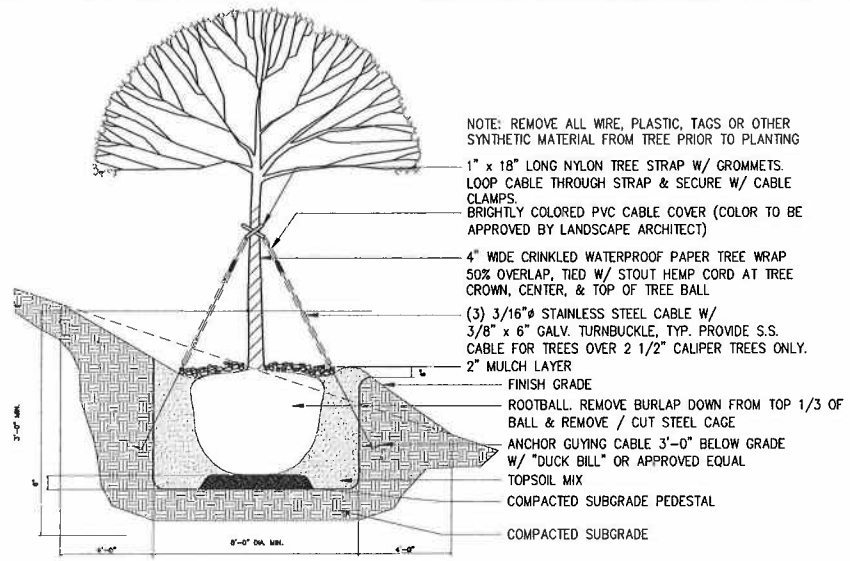
GILBOA DAM AND ASSOCIATED FACILITIES RECONSTRUCTION
CONTRACT CAT-212B
LANDSCAPE
PLANTING PLAN

90% SUBMITTAL

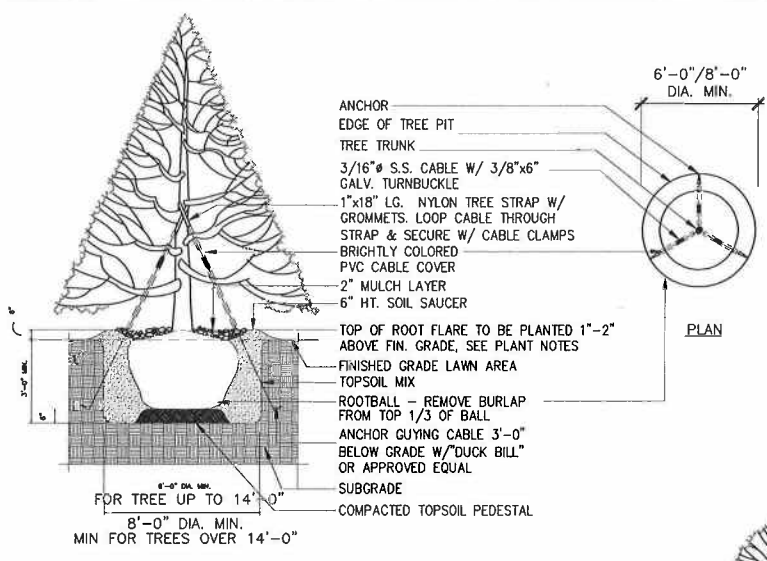
DATE AUGUST 2009
SHEET NO. 122 OF 122
DWG NO. L-CW-103



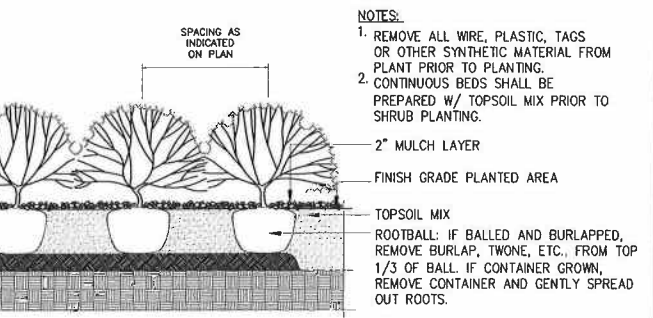
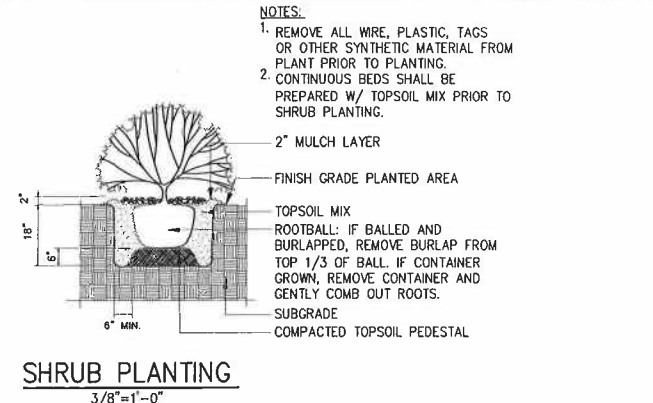
TREE PLANTING - DECIDUOUS
1/4"=1'-0"



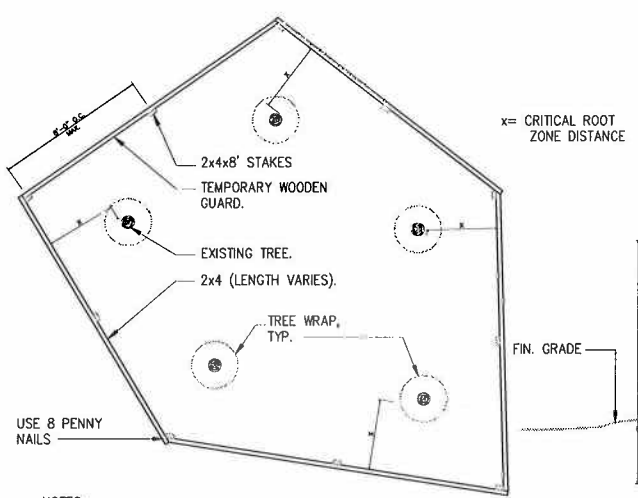
TREE PLANTING ON SLOPE
1/4"=1'-0"



TREE PLANTING - CONIFEROUS
1/4"=1'-0"

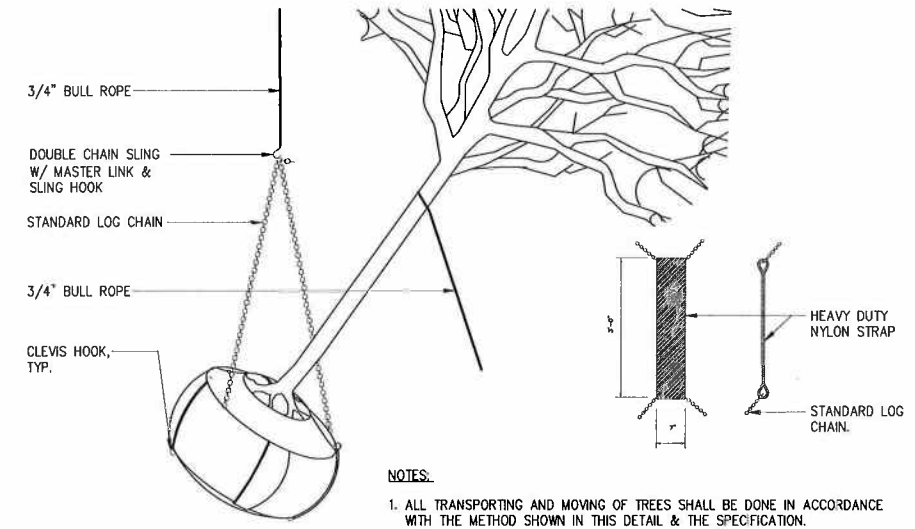
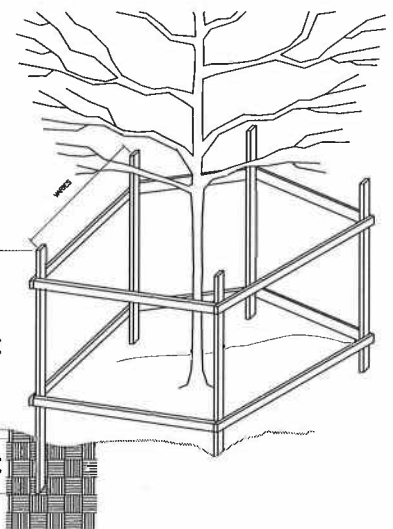


SHRUB PLANTING - MASS
3/8"=1'-0"



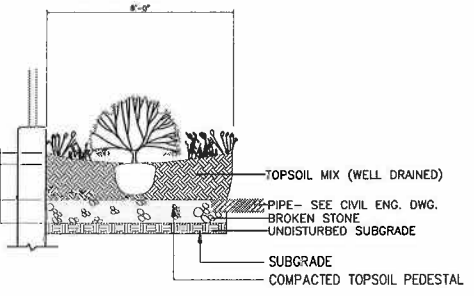
- NOTES:**
1. **TREE PROTECTION GUARD:** LUMBER SHALL BE YELLOW PINE, DOUGLAS FIR OR SPRUCE. NAILS SHALL BE GALVANIZED. NO PAINT WILL BE REQUIRED. ALL WORK SHALL BE DONE IN A NEAT AND WORKMANLIKE MANNER TO THE SATISFACTION OF THE RESIDENT ENGINEER.
 2. **TREE WRAP:** TREE WRAP SHALL BE SNOW FENCING COMPOSED OF COMMERCIAL WOVEN WOOD SLATS AND WIRE.
 3. **LINE POST/STAKE:** LINE POST/STAKE SHALL BE "HEAVY VINYL GUARD POST", "U" SHAPED, 13 GAUGE, RUSTPROOFED STEEL, SIX (6'-0") FOOT HEIGHT, MANUFACTURED BY BOUNDARY FENCE AND RAIL SYSTEMS, RICHMOND HILL, NY OR APPROVED EQUAL. COLOR TO BE BLACK OR GREEN.

TREE PROTECTION
1/4"=1'-0"

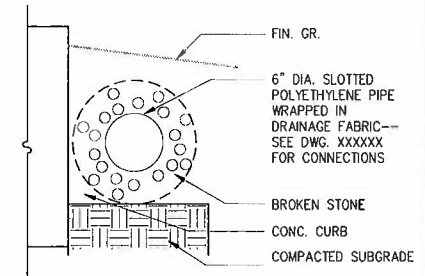


- NOTES:**
1. ALL TRANSPORTING AND MOVING OF TREES SHALL BE DONE IN ACCORDANCE WITH THE METHOD SHOWN IN THIS DETAIL & THE SPECIFICATION.
 2. A MIN. OF FOUR (4) STRAPS REQUIRED WHEN LIFTING TREES UP TO & INCLUDING 5" CALIPER AND/OR TREES WITH A MAX. 4'-6" ROOTBALL DIAMETER.
 3. A MIN. OF FIVE (5) STRAPS REQUIRED WHEN LIFTING TREES FROM 6-8" CALIPER.
 4. TREE LIFTING SYSTEMS SHALL BE SUPPLIED BY THE CONTRACTOR.
 5. ALL ADJUSTMENTS IN PLACE TO BE DONE FROM BOTTOM OF ROOT BALL. NO ROCKING OF TREE TRUNKS PERMITTED. ANY TREES IMPROPERLY PLACED MUST BE REMOVED FROM SITE.

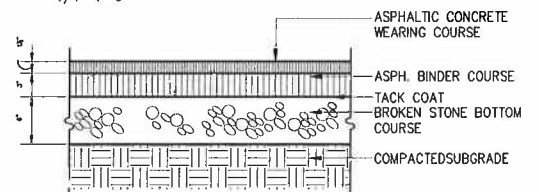
TREE LIFTING
1/2"=1'-0"



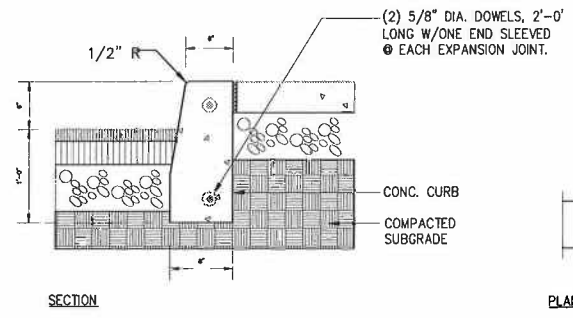
BIORETENTION CELL
1/4"=1'-0"



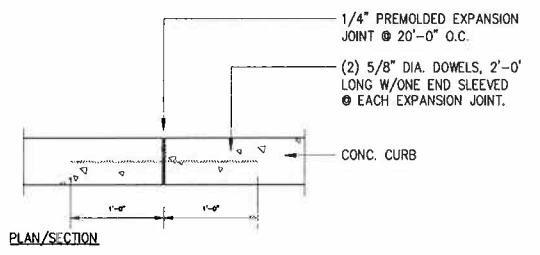
FRENCH DRAIN
1"=1'-0"



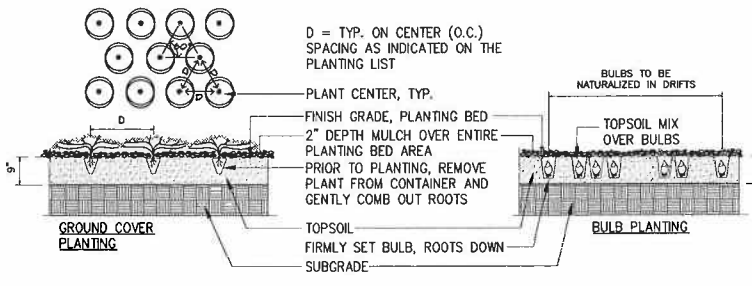
ASPHALT PAVEMENT
3/4"=1'-0"



CONCRETE CURB
1"=1'-0"



PLAN/SECTION



PERENNIAL & BULB PLANTING
3/8"=1'-0"

- NOTES:**
1. REMOVE ALL WIRE, PLASTIC, TAGS OR OTHER SYNTHETIC MATERIAL FROM PLANTS PRIOR TO PLANTING.
 2. CONTINUOUS BEDS SHALL BE PREPARED W/ TOPSOIL MIX PRIOR TO GROUND COVER PLANTING.
 3. BULBS SHALL BE LOCATED IN THE FIELD BY THE LANDSCAPE ARCHITECT.
 4. PLANTING HOLES FOR BULBS SHALL BE AMENDED W/ GROUND BONE MEAL, AS PER SPECIFICATIONS.

90% SUBMITTAL

GoshowArchitects
44 West 28th Street, 5 FL / New York, NY 10001
P 212.242.3735 / F 212.242.7460

Abel Bainsworth Butz, LLP
Landscape Architects & Site Planners

DESIGNED	DW
DRAWN	PMc
CHECKED	JB
SECT. CHIEF	FEG
PROJ. ENGR.	JC

Gannett Fleming
Hazen and Sawyer A Joint Venture
498 Seventh Avenue New York, NY 10018
212.777.8400 Fax 212.814.9049

APPROVED FOR THE CITY OF NEW YORK
EXECUTIVE PROJECT MANAGER
P.E.
CHIEF, UPSTATE WATER SUPPLY TREATMENT & FACILITIES DIVISION



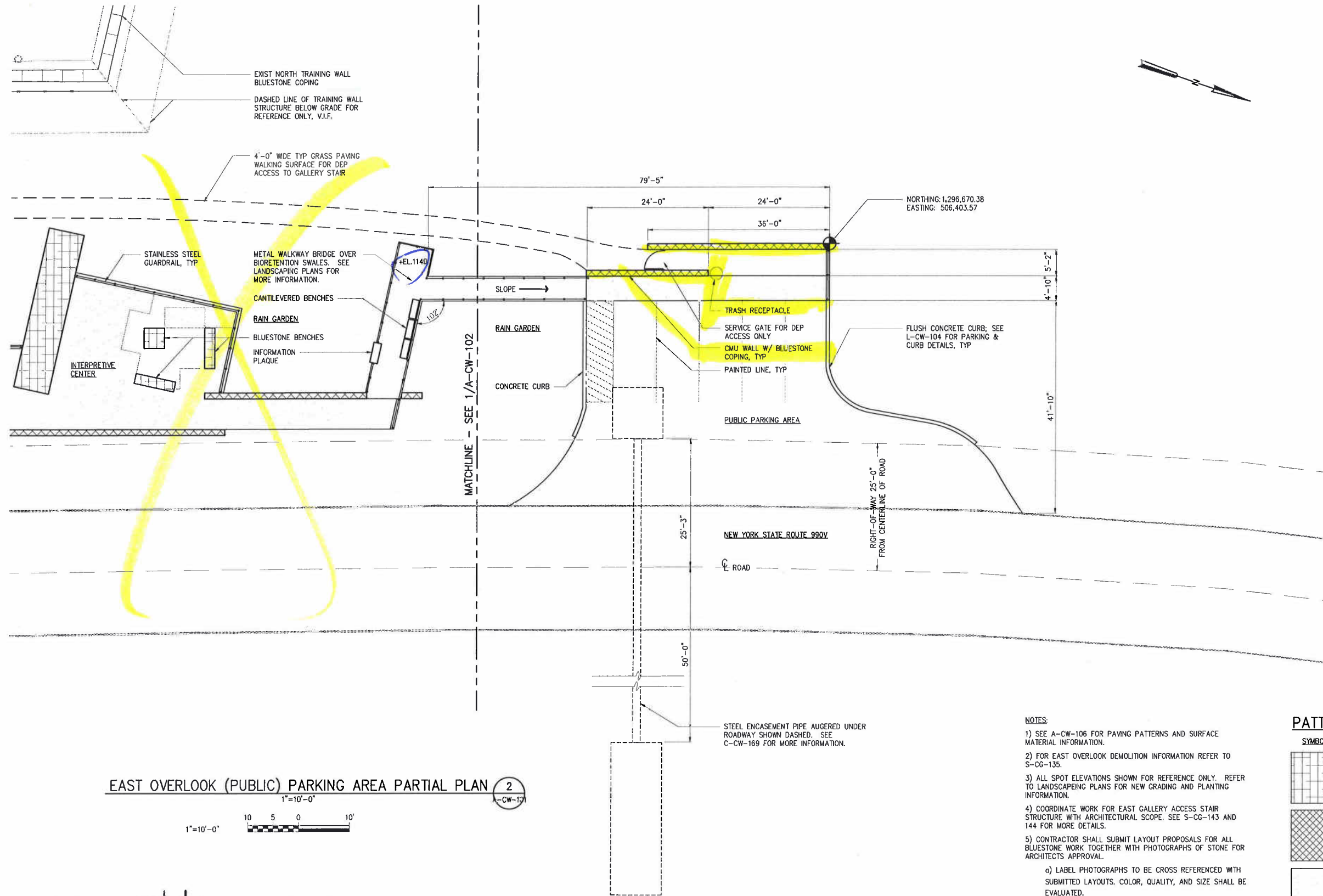
CITY OF NEW YORK
DEPARTMENT OF ENVIRONMENTAL PROTECTION
BUREAU OF ENGINEERING DESIGN & CONSTRUCTION
WM-30 WATERSHED IMPROVEMENTS
RECONSTRUCTION OF
CATSKILL WATERSHED DAMS AND ASSOCIATED FACILITIES

GILBOA DAM AND ASSOCIATED FACILITIES RECONSTRUCTION
CONTRACT CAT-212B

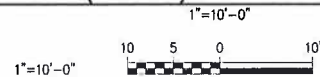
LANDSCAPE
SITE DETAILS

DATE	AUGUST 2009
SHEET NO.	123 OF
DWG NO.	L-CW-104

XREFS= CAT211-BORDER, CALOPO IMAGES= ABB-Accel-Logo, SECTION-RAIN GARDEN COPY.



EAST OVERLOOK (PUBLIC) PARKING AREA PARTIAL PLAN 2



- NOTES:
- 1) SEE A-CW-106 FOR PAVING PATTERNS AND SURFACE MATERIAL INFORMATION.
 - 2) FOR EAST OVERLOOK DEMOLITION INFORMATION REFER TO S-CG-135.
 - 3) ALL SPOT ELEVATIONS SHOWN FOR REFERENCE ONLY. REFER TO LANDSCAPING PLANS FOR NEW GRADING AND PLANTING INFORMATION.
 - 4) COORDINATE WORK FOR EAST GALLERY ACCESS STAIR STRUCTURE WITH ARCHITECTURAL SCOPE. SEE S-CG-143 AND 144 FOR MORE DETAILS.
 - 5) CONTRACTOR SHALL SUBMIT LAYOUT PROPOSALS FOR ALL BLUESTONE WORK TOGETHER WITH PHOTOGRAPHS OF STONE FOR ARCHITECTS APPROVAL.
- a) LABEL PHOTOGRAPHS TO BE CROSS REFERENCED WITH SUBMITTED LAYOUTS. COLOR, QUALITY, AND SIZE SHALL BE EVALUATED.

PATTERN LEGEND

SYMBOL	DESCRIPTION
	SALVAGED BLUESTONE (NEW CONSTRUCTION)
	CMU WALL W/ BLUESTONE COPING
	INTEGRALLY COLORED CONCRETE WALKING SURFACE

GoshowArchitects **abb** Abel Bainson Butz, LLP
44 West 28th Street, 5 Fl / New York, NY 10001
P 212.242.3735 / F 212.242.7460

GENERAL CONSTRUCTION NOTE:
SEE CIVIL AND STRUCTURAL
DRAWINGS FOR COMPLETE SCOPE
OF WORK

DESIGNED KT
DRAWN MW
CHECKED MR
SECT.CHIEF FEG
PROJ.ENGR. JC

SCALE
AS SHOWN

Gannett Fleming
HAZEN AND SAWYER A Joint Venture
480 Seventh Avenue - New York, NY 10018
212.777.8400 / Fax: 212.614.9049

APPROVED FOR THE CITY OF NEW YORK
EXECUTIVE PROJECT MANAGER
P.E.
CHIEF, UPSTATE WATER SUPPLY TREATMENT
& FACILITIES DIVISION



CITY OF NEW YORK
DEPARTMENT OF ENVIRONMENTAL PROTECTION
BUREAU OF ENGINEERING DESIGN & CONSTRUCTION
WM-30 WATERSHED IMPROVEMENTS
RECONSTRUCTION OF
CATSKILL WATERSHED DAMS AND ASSOCIATED FACILITIES

GILBOA DAM AND ASSOCIATED FACILITIES RECONSTRUCTION
CAT-212B
ARCHITECTURAL

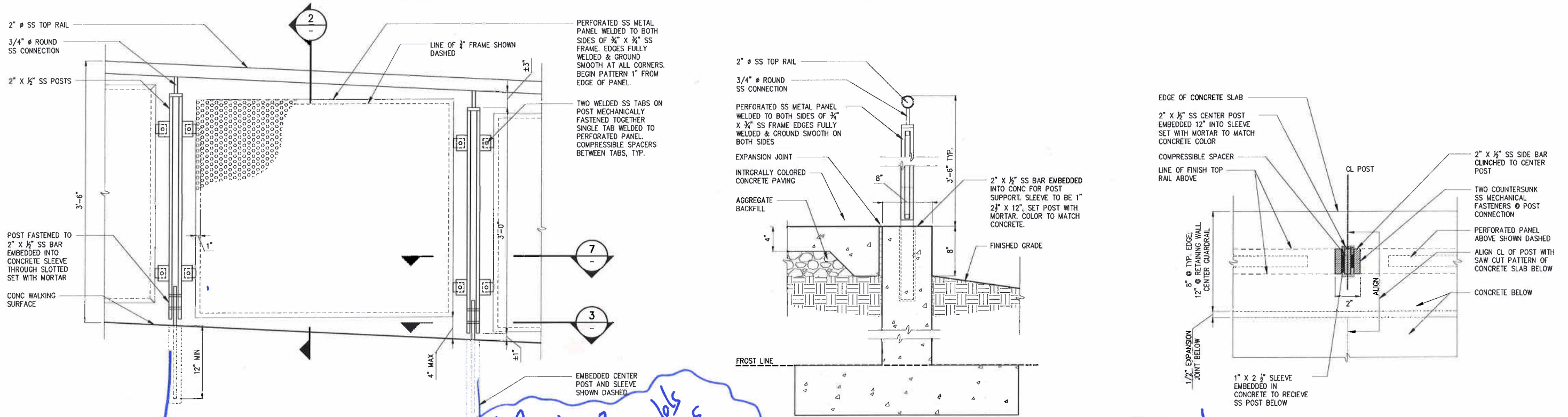
EAST OVERLOOK PARTIAL PLAN - SHEET 2 OF 2

90% SUBMITTAL

DATE AUGUST 2009
SHEET NO: A3 OF
DWG NO: A-CW-103

D:\Proj\2006\200621 Gilboa Dam\X CAD\3D Construction Documents\CAT-212B\Arch\SD\1030.dwg, 9/21/2009 9:13:20 PM, Adobe PDF.pc3

XREFS= CA-211-BORDER, AZ-CW-D05, AZ-CW-D12, AZ-CW-D16, AZ-CW-D13
INACES= ABB-Acid-Logo.



DETAIL AT METAL GUARDRAIL

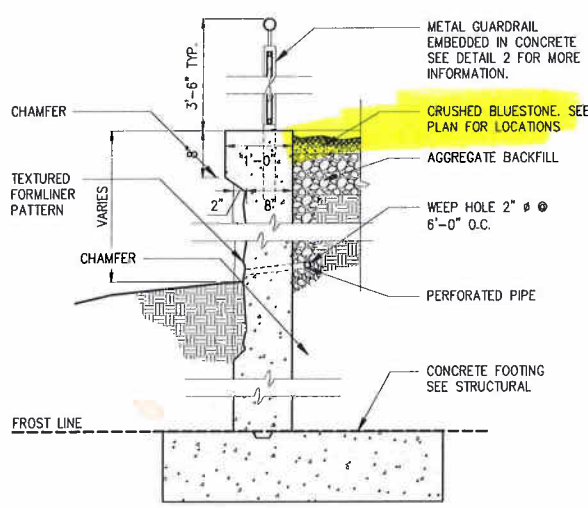
DETAIL 1
1-1/2"=1'-0" A-CW-105

DETAIL AT METAL GAURDRAIL IN CONCRETE

DETAIL 2
1-1/2"=1'-0" A-CW-105

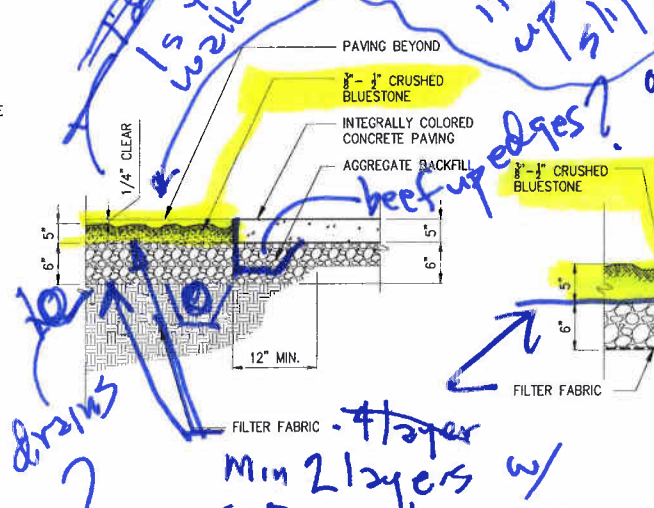
DETAIL AT POST BASE IN CONCRETE

DETAIL 3
3"=1'-0" -



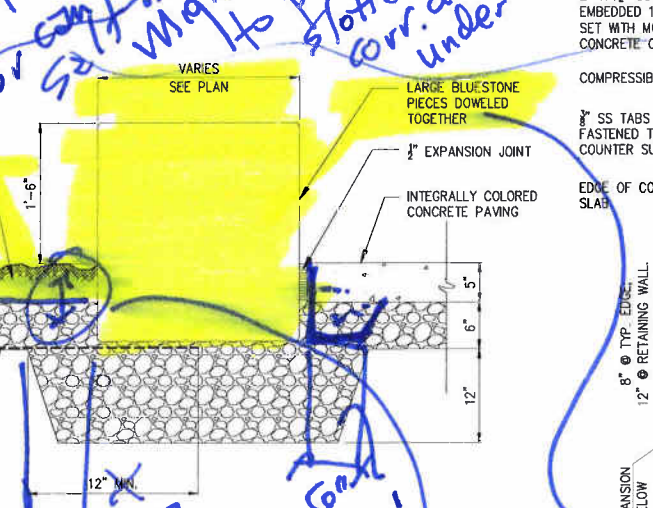
DETAIL AT CONCRETE RETAINING WALL

DETAIL 4
3/4"=1'-0" A-SD-105



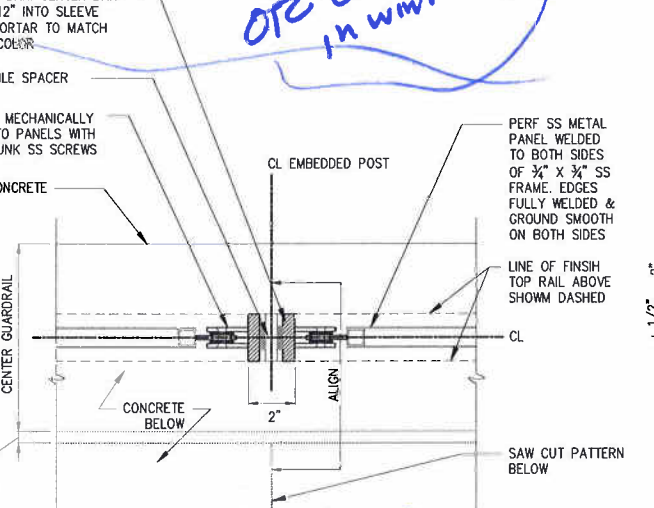
DETAIL AT CRUSHED BLUESTONE TO CONCRETE PAVING

DETAIL 5
3/4"=1'-0" A-CW-105



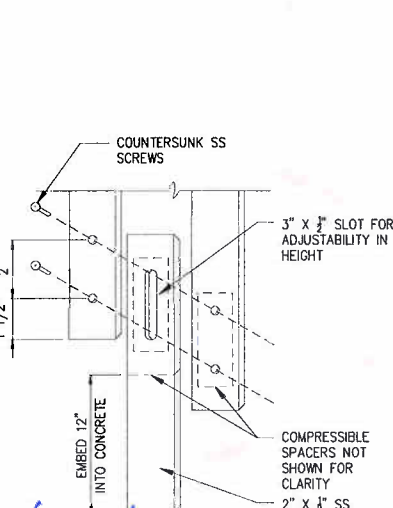
DETAIL AT BLUESTONE BENCH

DETAIL 6
3/4"=1'-0" A-CW-105



DETAIL AT PANEL CONNECTION TO POST

DETAIL 7
3"=1'-0" -



PICTORIAL VIEW OF POST CONNECTION

DETAIL 8
NTS -

Is the idea you? walk on gravel? its going to heave up in winter builds up water becomes slipping hazard or can't walk heavily? Might want to put some slotted corr. drains under this & drain to daylight (where salt runoff will be ok) or closes in winter?

beef up edges? or can't walk heavily? Might want to put some slotted corr. drains under this & drain to daylight (where salt runoff will be ok) or closes in winter?

drains? Min 2 layers w/ 50% overlap on seams

you'll get mixing in winters at least w/ fabric separation

You need more than dowels to keep rocks from spreading

GoshowArchitects
44 West 28th Street, 5 Fl / New York, NY 10001
P 212.242.3735 / F 212.242.7460

Abel Bainson Butz, LLP
Landscape Architects | Site Planners

GENERAL CONSTRUCTION NOTE:
SEE CIVIL AND STRUCTURAL
DRAWINGS FOR COMPLETE SCOPE
OF WORK

Gannett Fleming
Hazen and Sawyer
A Joint Venture
408 Seventh Avenue - New York, NY 10018
212.777.6400 • Fax 212.614.9048

APPROVED FOR THE CITY OF NEW YORK
EXECUTIVE PROJECT MANAGER
P.E.
CHIEF, UPSTATE WATER SUPPLY TREATMENT & FACILITIES DIVISION



CITY OF NEW YORK
DEPARTMENT OF ENVIRONMENTAL PROTECTION
BUREAU OF ENGINEERING DESIGN & CONSTRUCTION
WM-30 WATERSHED IMPROVEMENTS
RECONSTRUCTION OF
CATSKILL WATERSHED DAMS AND ASSOCIATED FACILITIES

GILBOA DAM AND ASSOCIATED FACILITIES RECONSTRUCTION
CONTRACT CAT-212B
ARCHITECTURAL
DAM RECONSTRUCTION
DETAILS - SHEET 3 OF 5

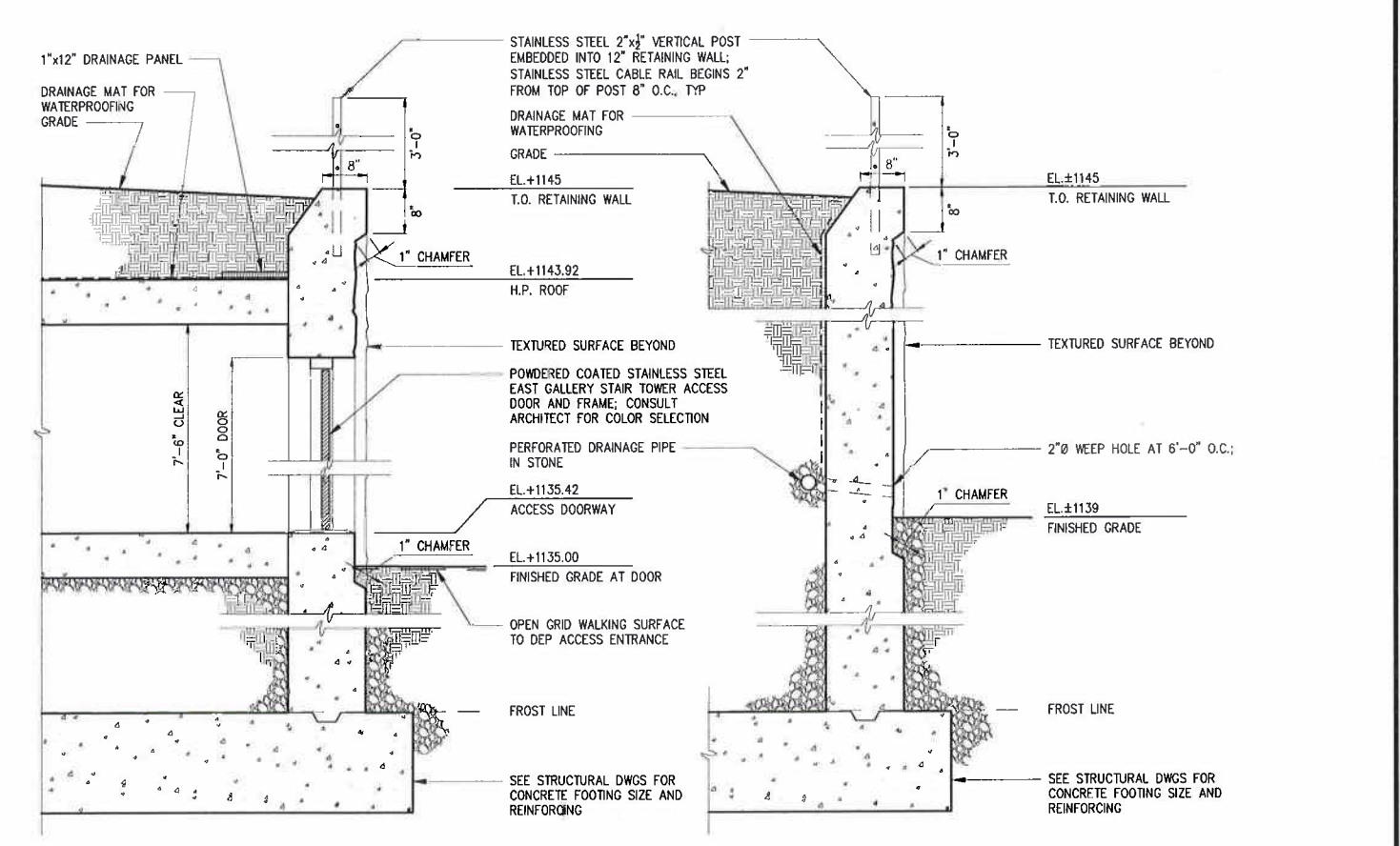
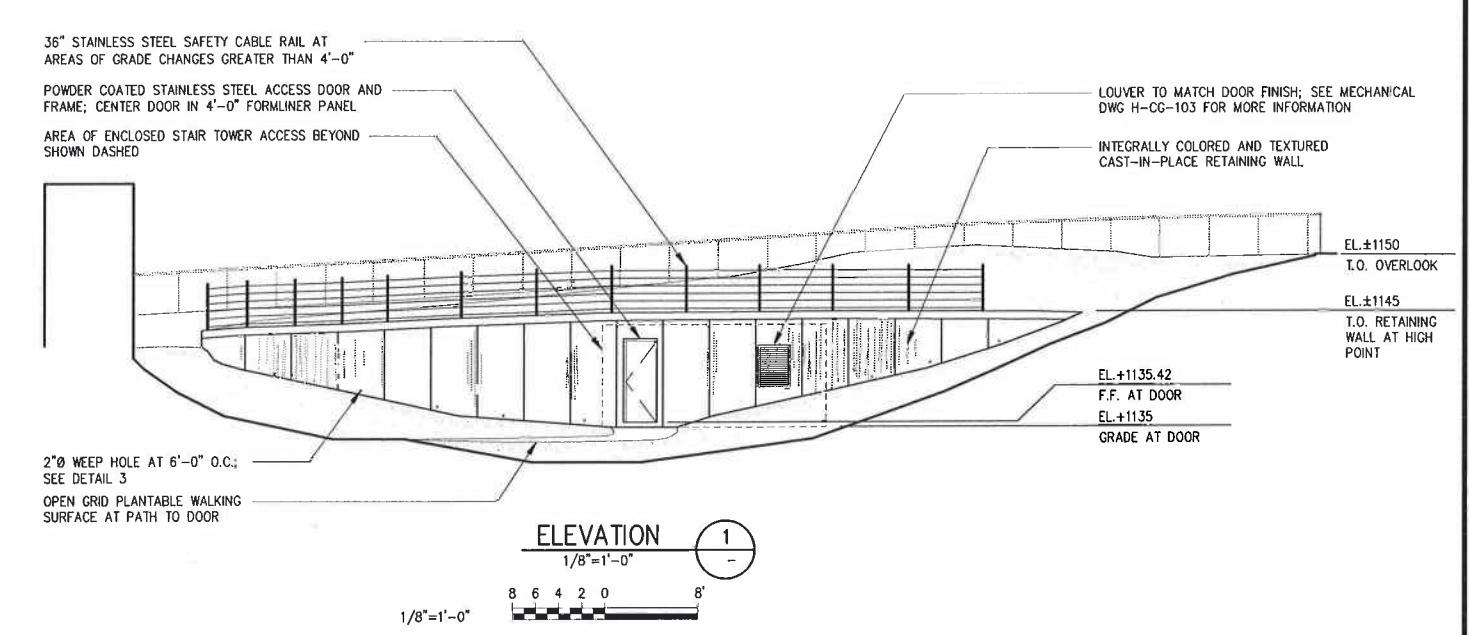
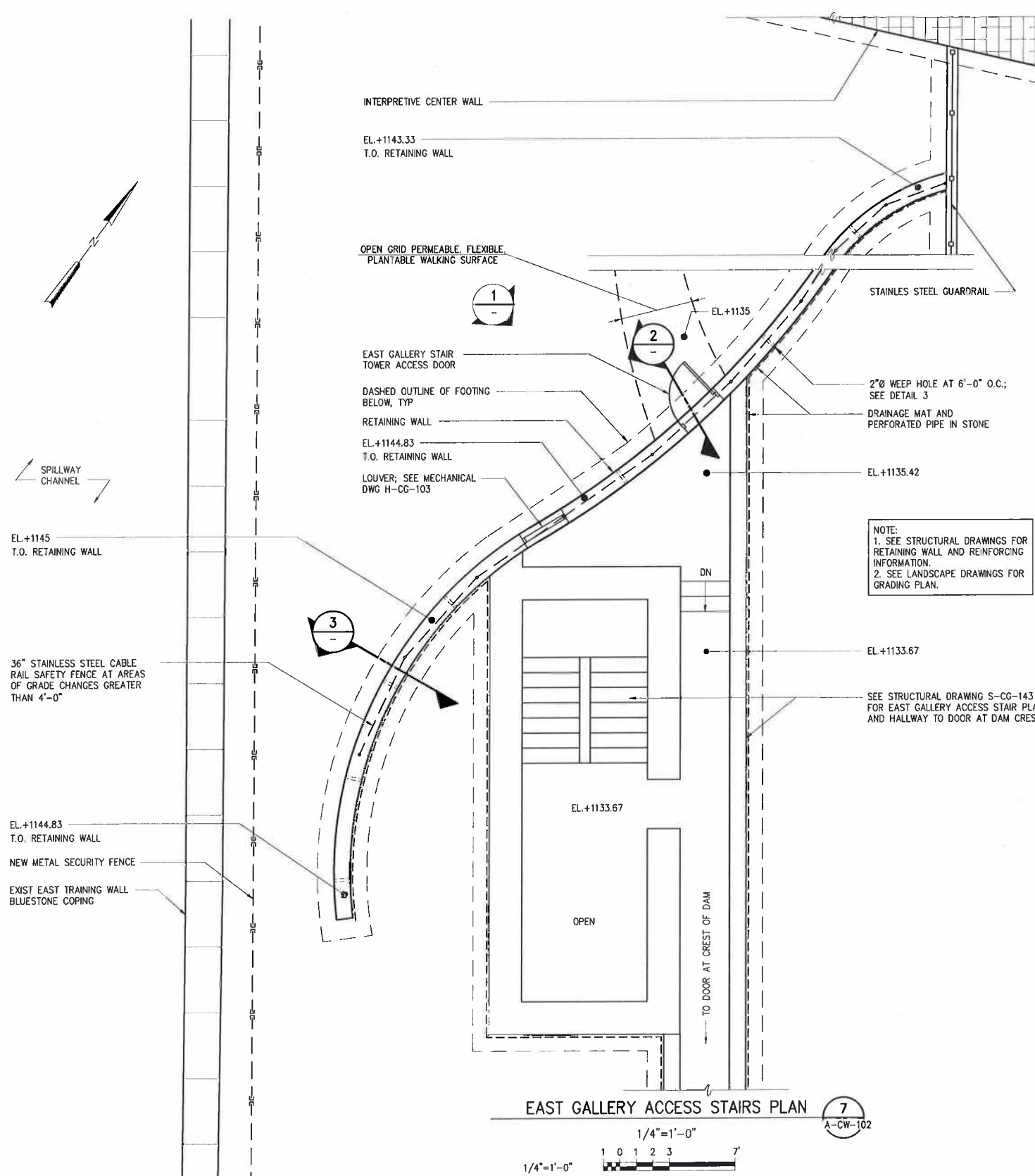
90% SUBMITTAL
DATE AUGUST 2009
SHEET NO. A19 OF
DWG NO. A-SD-103

NO.	DATE	ISSUED FOR	BY

DESIGNED	KT
DRAWN	LAE
CHECKED	MR
SECT. CHIEF	FEG
PROJ. ENGR.	JC

SCALE	AS SHOWN
-------	----------

D:\Projects\2009\20090821 Gilboa Dam CAD\DWG Construction Documents\CAT-212B\Arch\Arch\1040.dwg, 8/2/2009 8:51:37 PM, Adobe PDF, pc3
X:\CS-5\CAT-212\BORDER, B-SR-SY, AZ-CW-DIO, AZ-CW-EG, AZ-CW-DIG
MacGee - ASB - Acco-Lago, LCM1020 - Grading Plan-090817 copy.



GoshowArchitects
44 West 28th Street, 5 Fl / New York, NY 10001
P 212.242.3735 / F 212.242.7460

abb
Abel Bainson Butz, LLP
Landscape Architects | Site Planners

GENERAL CONSTRUCTION NOTE:
SEE CIVIL AND STRUCTURAL
DRAWINGS FOR COMPLETE SCOPE
OF WORK

DESIGNED	KT
DRAWN	MW
CHECKED	MR
SECT. CHIEF	FEG
PROJ. ENGR.	JC

SCALE	AS SHOWN
DATE	
ISSUED FOR	
BY	

Gannett Fleming
Hazen and Sawyer
498 Seventh Avenue - New York, NY 10018
212.777.8400 - Fax: 212.614.9049

APPROVED FOR THE CITY OF NEW YORK
EXECUTIVE PROJECT MANAGER
P.E.
CHIEF, UPSTATE WATER SUPPLY TREATMENT
& FACILITIES DIVISION

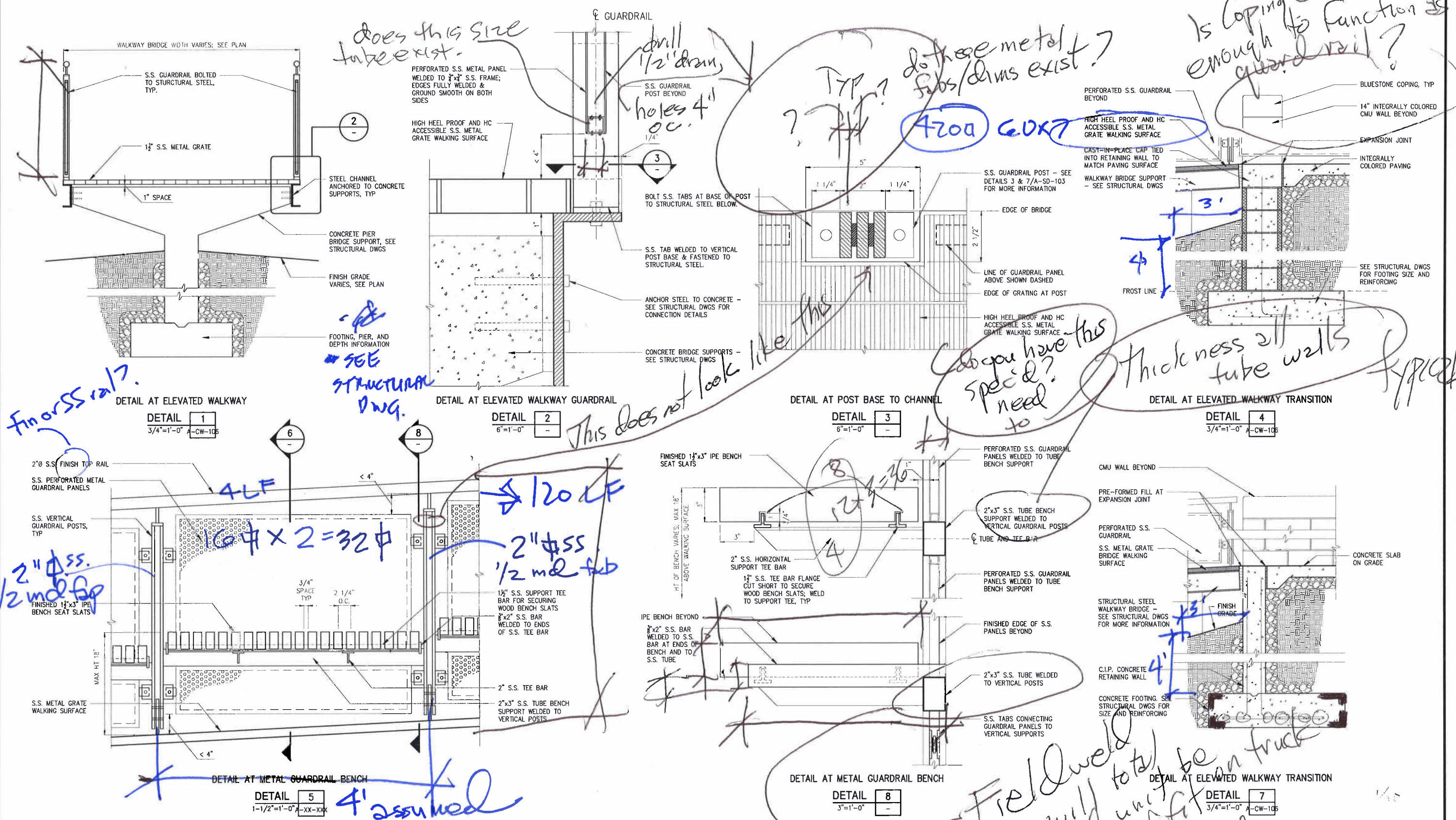
CITY OF NEW YORK
DEPARTMENT OF ENVIRONMENTAL PROTECTION
BUREAU OF ENGINEERING DESIGN & CONSTRUCTION
WM-30 WATERSHED IMPROVEMENTS
RECONSTRUCTION OF
CATSKILL WATERSHED DAMS AND ASSOCIATED FACILITIES

GILBOA DAM AND ASSOCIATED FACILITIES RECONSTRUCTION
CONTRACT CAT-212B
ARCHITECTURAL
EAST GALLERY ACCESS STAIR

DATE	AUGUST 2009
SHEET NO.	A4 OF
DWG NO.	A-CW-104

90% SUBMITTAL

Did not price this pg.
8-9-22-09



GoshowArchitects
44 West 28th Street, 5 Fl / New York, NY 10001
P 212.242.3735 / F 212.242.7460

Abel Bainson Butz, LLP
Landscape Architects | Site Planners

GENERAL CONSTRUCTION NOTE:
SEE CIVIL AND STRUCTURAL
DRAWINGS FOR COMPLETE SCOPE
OF WORK

Gannett Fleming
Hazen and Sawyer
A Joint Venture
490 Seventh Avenue - New York, NY 10018
212.777-8400 - Fax: 212.814-9049

APPROVED FOR THE CITY OF NEW YORK
EXECUTIVE PROJECT MANAGER
P.E.
CHIEF, UPSTATE WATER SUPPLY TREATMENT
& FACILITIES DIVISION



CITY OF NEW YORK
DEPARTMENT OF ENVIRONMENTAL PROTECTION
BUREAU OF ENGINEERING DESIGN & CONSTRUCTION
WM-30 WATERSHED IMPROVEMENTS
RECONSTRUCTION OF
CATSKILL WATERSHED DAMS AND ASSOCIATED FACILITIES

GILBOA DAM AND ASSOCIATED FACILITIES RECONSTRUCTION
CONTRACT CAT-212B
ARCHITECTURAL
DAM RECONSTRUCTION
DETAILS - SHEET 4 OF 5

90% SUBMITTAL
DATE: AUGUST 2009
SHEET NO: A20 OF 100
DWG NO: A-SD-104

D:\Pro\2006\200621 Gilboa Dam\3D Construction Documents\CAT-212B\Arch\SD\1040.dwg, 8/21/2009 9:00:07 PM, Adobe PDF .pdf

XREFS: C:\311-BORDER-AZ-CW-002
IMAGES: 48B-Arch-Logo

D:\Proj\2008\0821 Gilboa Dam\X CAD\X Construction Documents\CAT-212B\Arch\DWG\050.dwg, 8/21/2009 5:51:03 PM, Adobe PDF, pdf
XREFS= CAT711-BORDER, AX-SP-TP, SZ-CG-003, SB-CG-LP, AN-SP-SI, AZ-CW-S10, AC-SP, AX-SP-S1, 1130, 43650 - Proposed Base Plan, Misc Items-212
IMAGES= AEB-Accu-Logo, West Overlook College quad4, West Overlook College-east wall3 copy6.

GoshowArchitects



Abel Bainson Butz, LLP
Landscape Architects | Site Planners

44 West 28th Street, 5 Fl / New York, NY 10001
P 212.242.3735 / F 212.242.7460

GENERAL CONSTRUCTION NOTE:
SEE CIVIL AND STRUCTURAL
DRAWINGS FOR COMPLETE SCOPE
OF WORK

DESIGNED KT
DRAWN MW
CHECKED MR
SECT.CHIEF FEG
PROJ.ENGR. JC

SCALE
AS SHOWN

Gannett Fleming
HAZEN AND SAWYER A Joint Venture
498 Seventh Avenue - New York, NY 10018
212.777.8400 / Fax: 212.614.9040

APPROVED FOR THE CITY OF NEW YORK
EXECUTIVE PROJECT MANAGER
P.E.
CHIEF, UPSTATE WATER SUPPLY TREATMENT
& FACILITIES DIVISION



CITY OF NEW YORK
DEPARTMENT OF ENVIRONMENTAL PROTECTION
BUREAU OF ENGINEERING DESIGN & CONSTRUCTION
WM-30 WATERSHED IMPROVEMENTS
RECONSTRUCTION OF
CATSKILL WATERSHED DAMS AND ASSOCIATED FACILITIES

GILBOA DAM AND ASSOCIATED FACILITIES RECONSTRUCTION
CONTRACT CAT-212B
ARCHITECTURAL
DETAILED WEST PARAPET PLAN AND ELEVATIONS

90% SUBMITTAL

DATE AUGUST 2009
SHEET NO: A2 OF
DWG NO: A-CW-105

