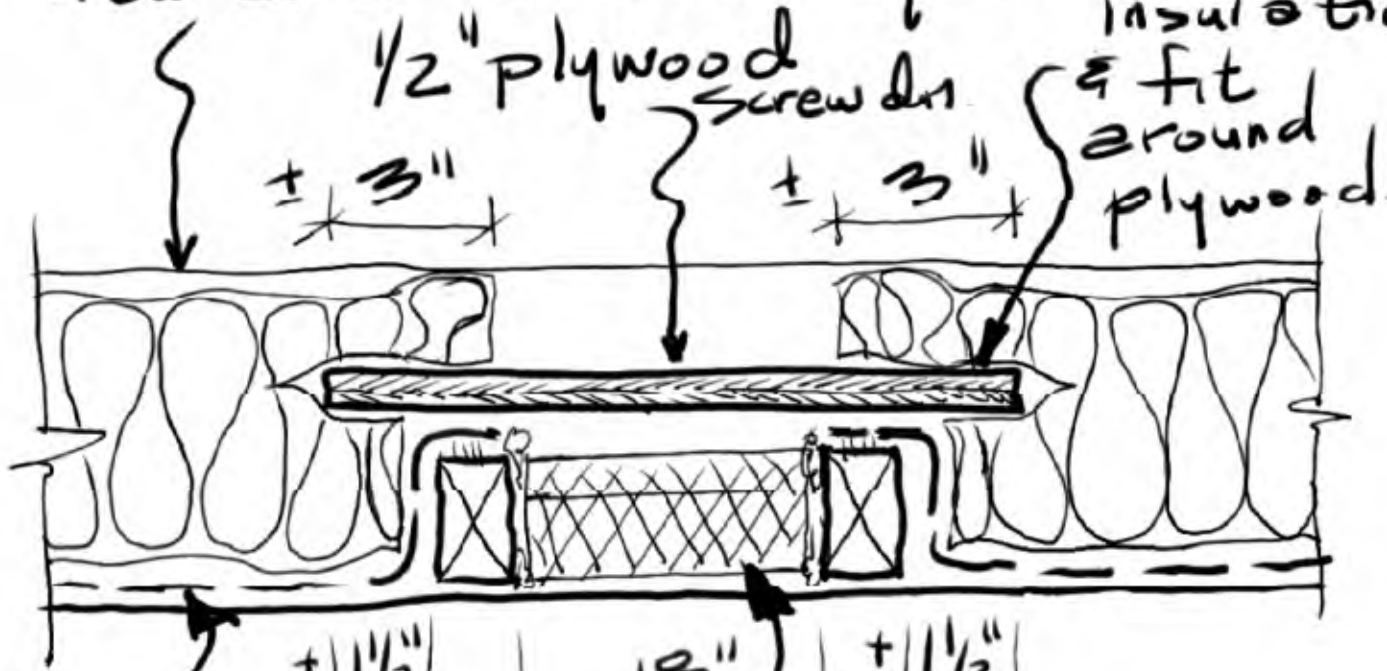


SK-4
2011-07-07

WALKWAY

New 2x6 tie beam beyond Slit
Insulation



1/2" plywood
Screw in

Slit
Insulation
& fit
around
plywood.

± 3"

± 3"

± 1 1/2"

18"

± 1 1/2"

24"

Tyck-tape
seals w/ Tyck
tape caulk to
2x4 walkway
support

3" FOAM INSUL
Seal gaps w/
spray foam